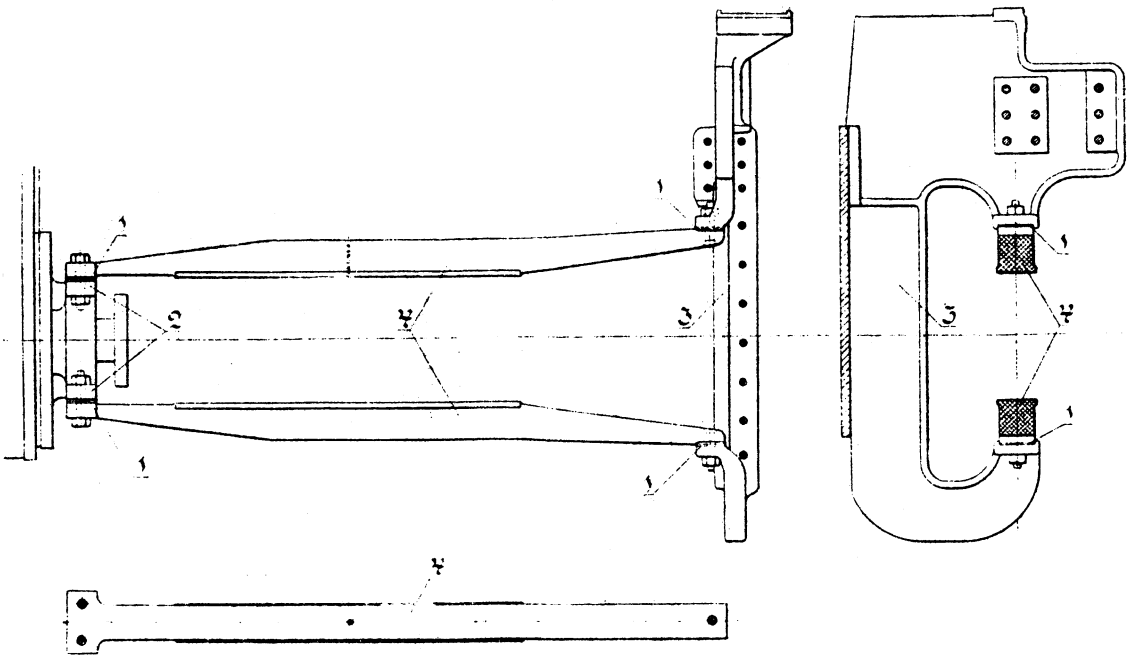
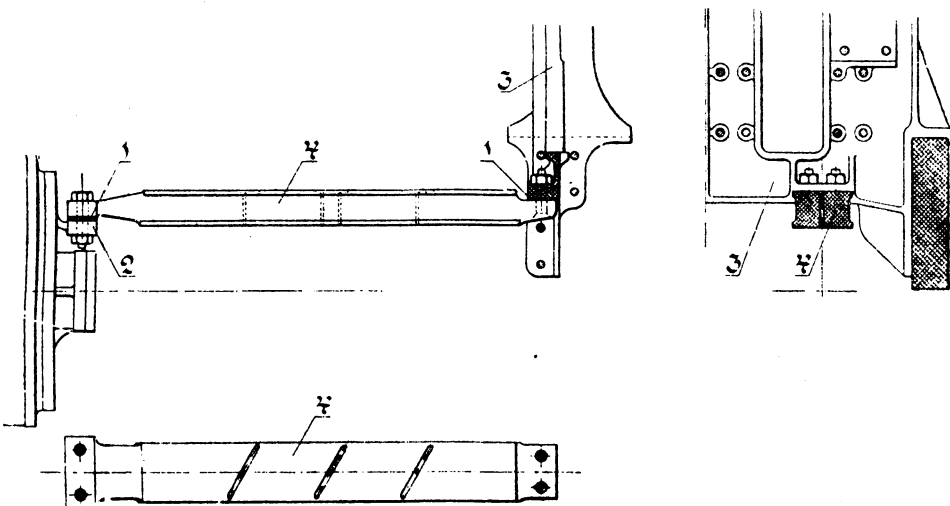


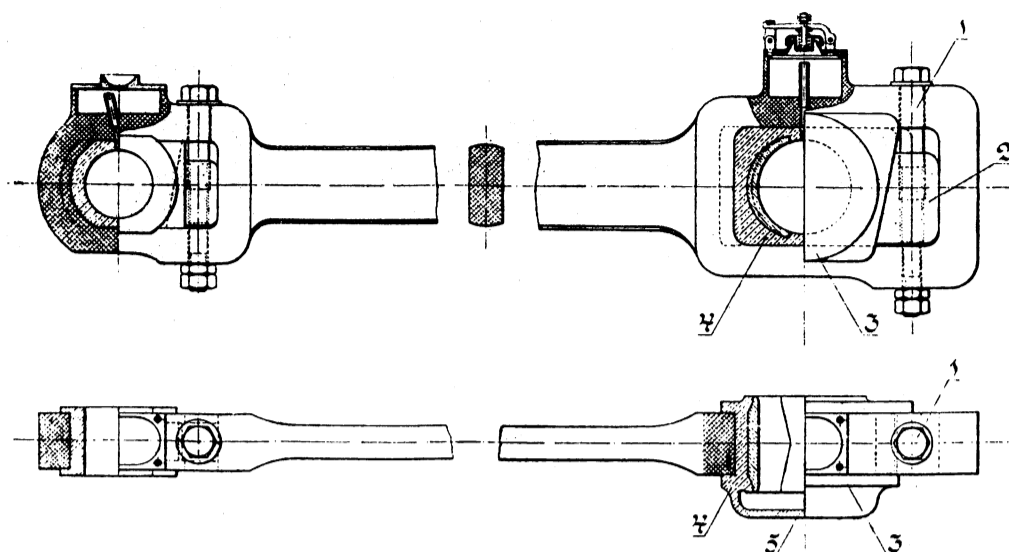
Tvärstycke för en styrskena. 1: 8.



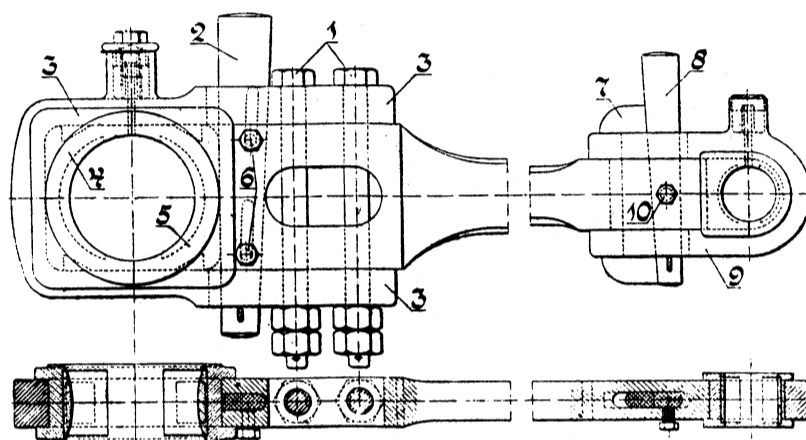
Styrskenor med hållare. 1: 20.



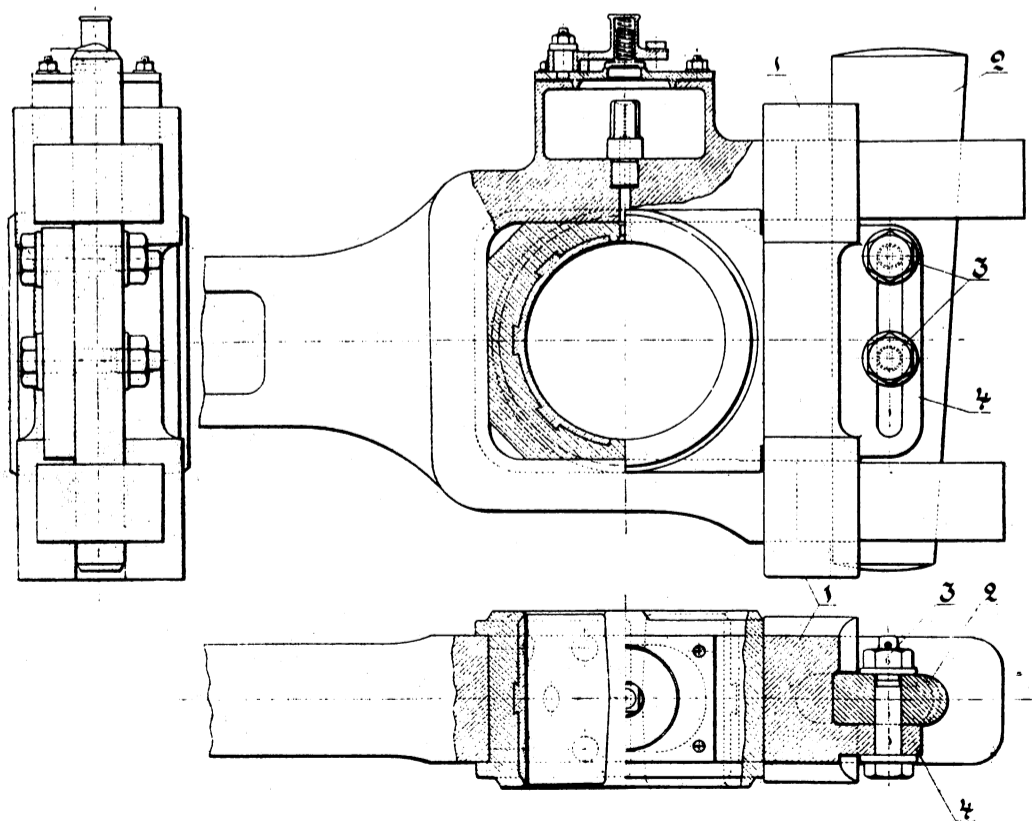
Styrskena med hållare. 1: 20.



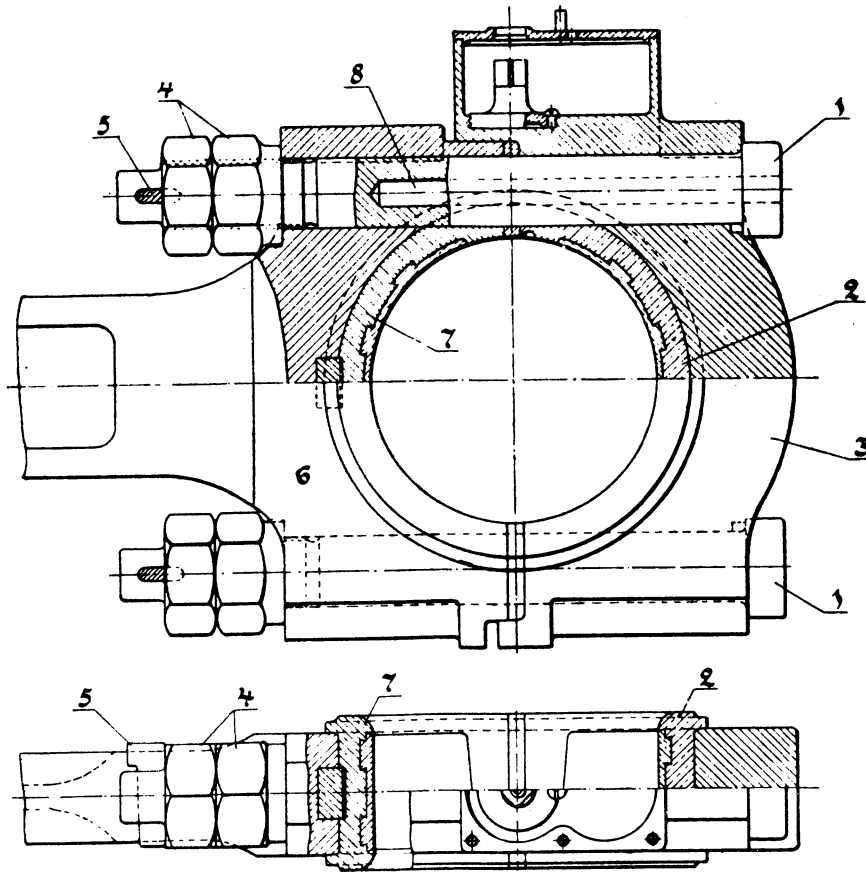
Vevstake med slutna huvuden. Lok. litt. Kd. 1: 8.



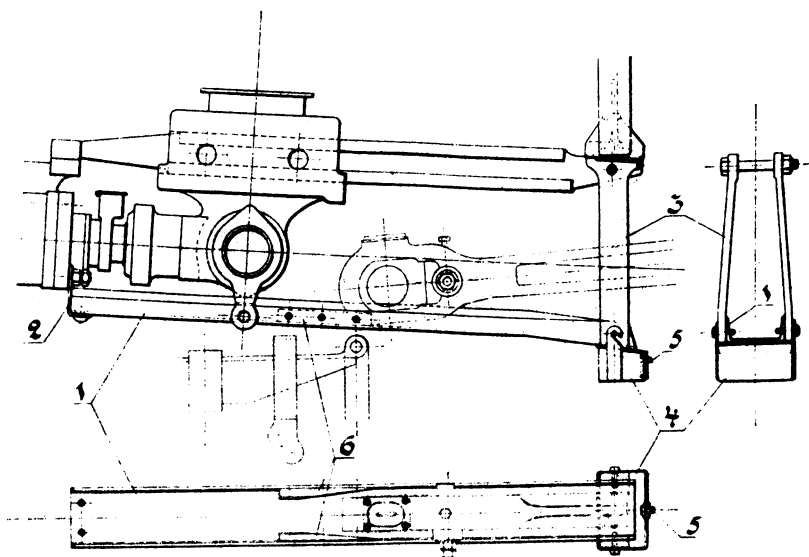
Vevstake med öppna huvuden. Lok. litt. P. 1: 8.



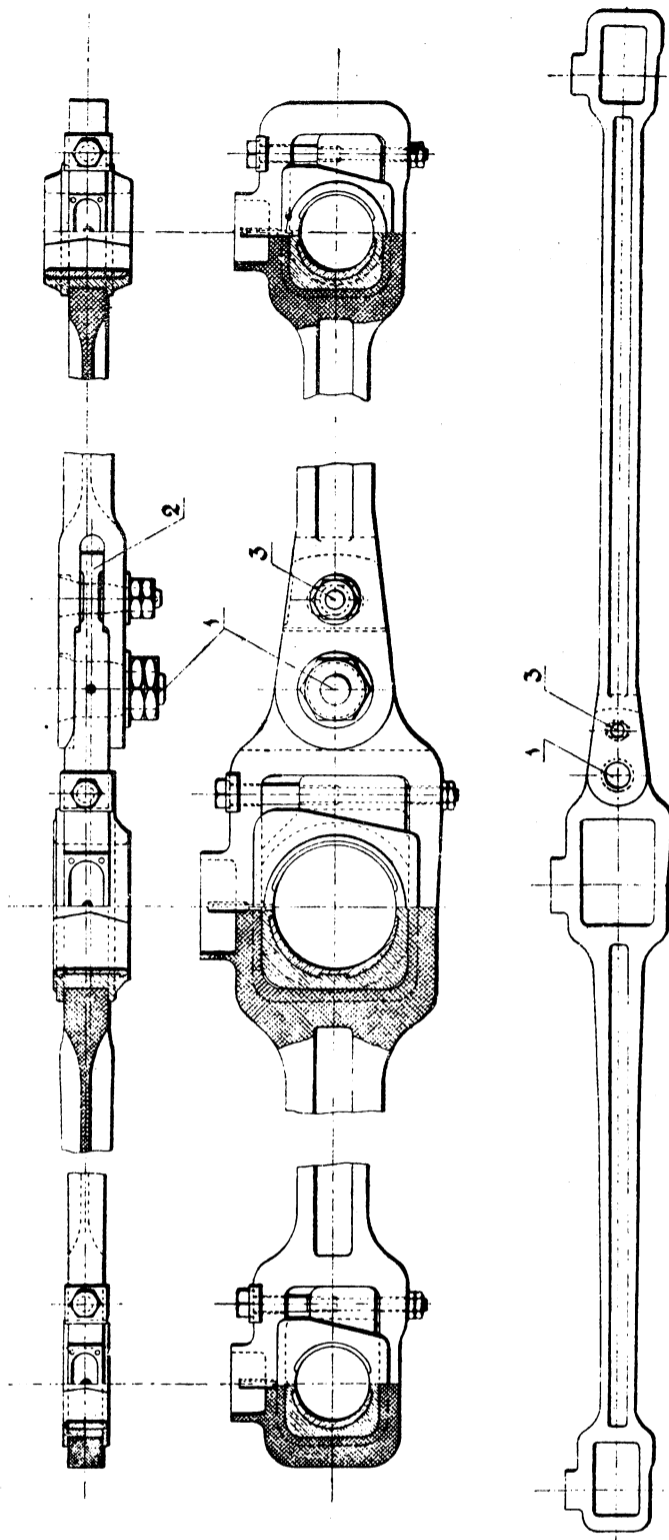
Gaffelformat vevstakshuvud. Lok. litt. B. 1: 6.



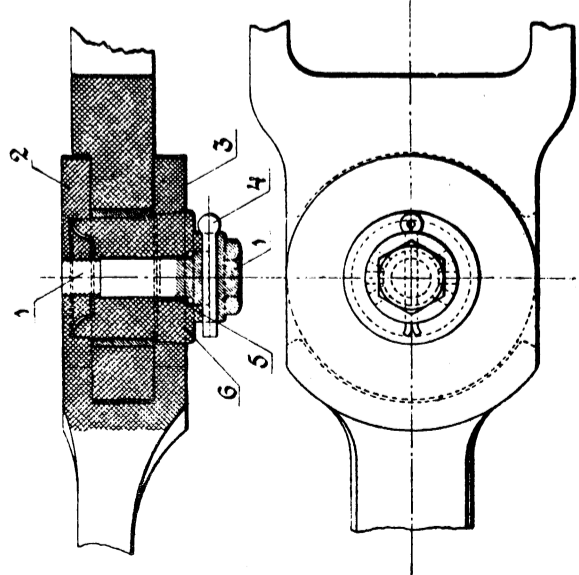
Lagerformat vevstakshuvud. Lok. litt. A, E. 1: 6.



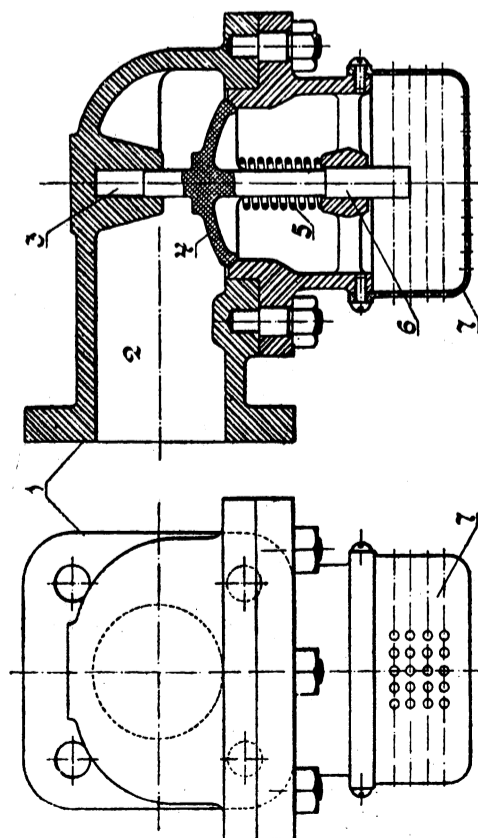
Fångjärn för vevstake. Lok. litt. B. 1: 20.



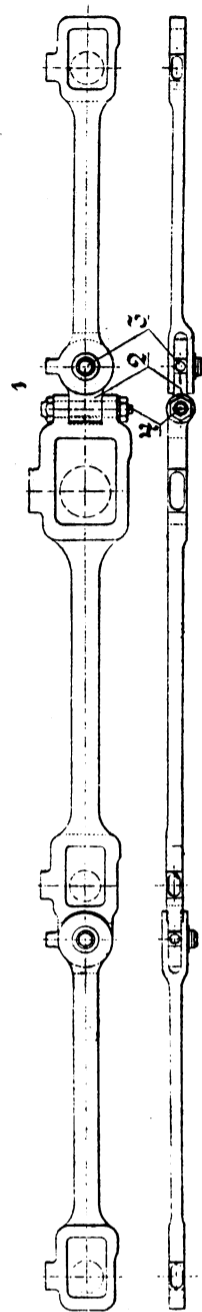
Koppelstänger till lok. litt. L. 1: 10 och I: 20.



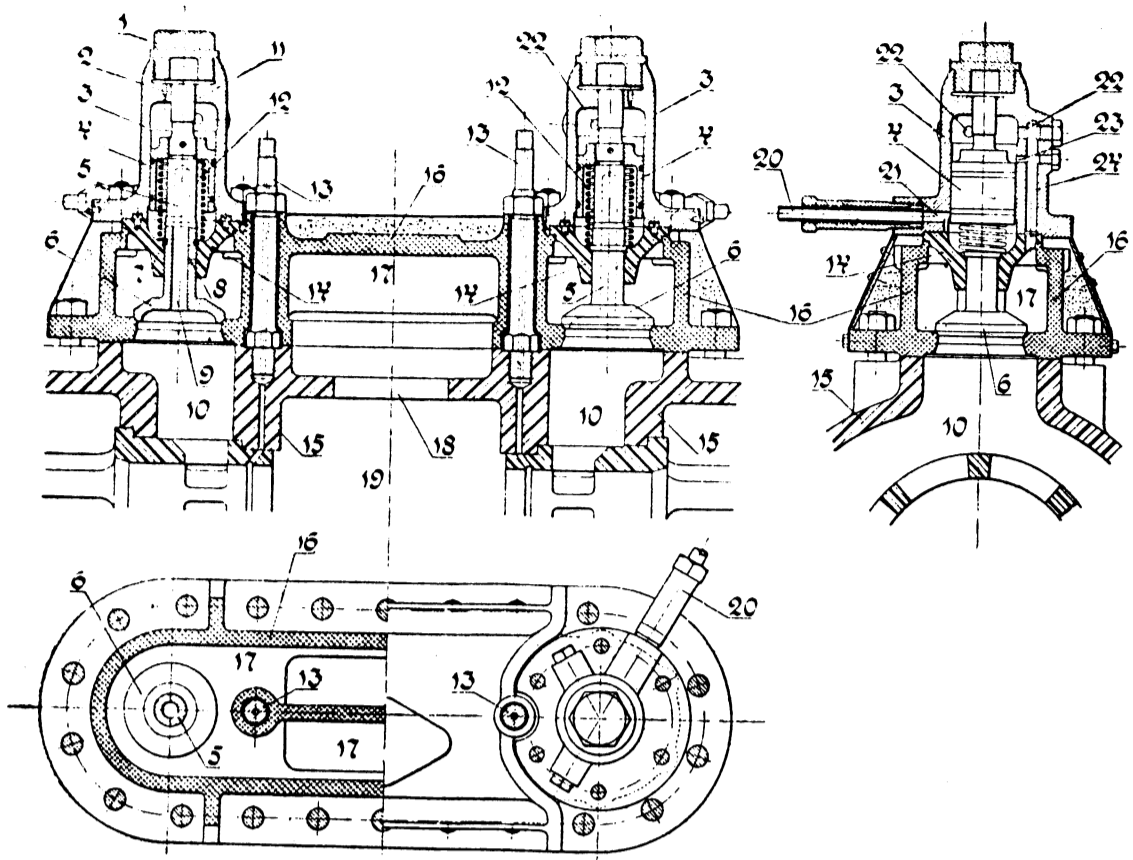
Bult för ledad koppelstäng. 1: 5.



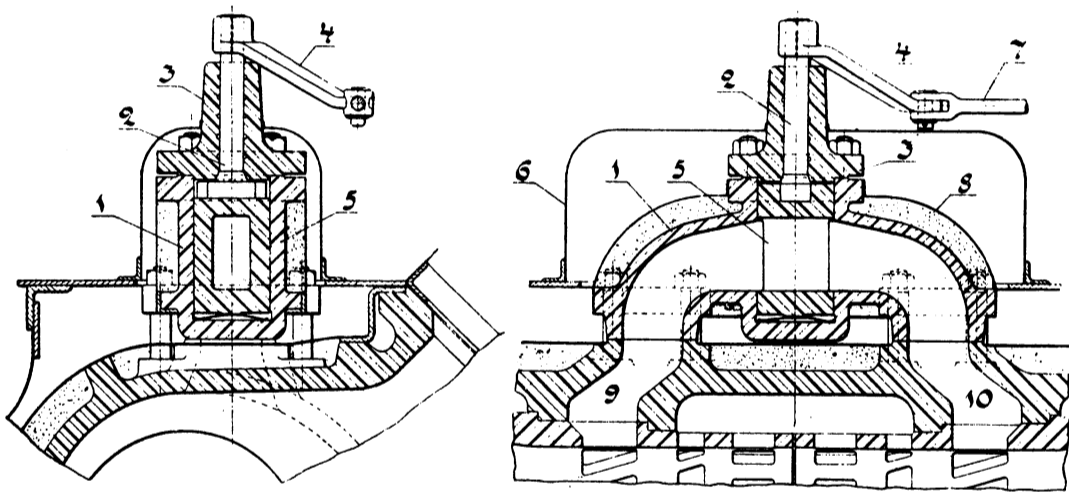
Luftinsläppningsventil & slidskåp. 1: 4.



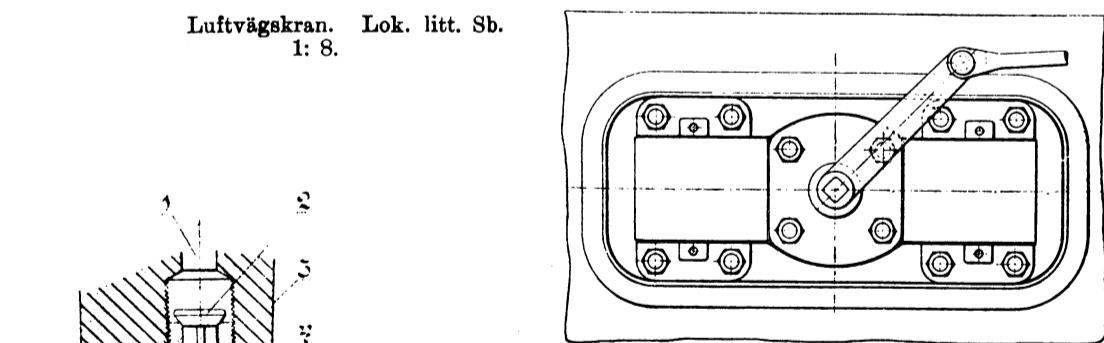
Koppelstänger till lok. litt. N. 1: 25.



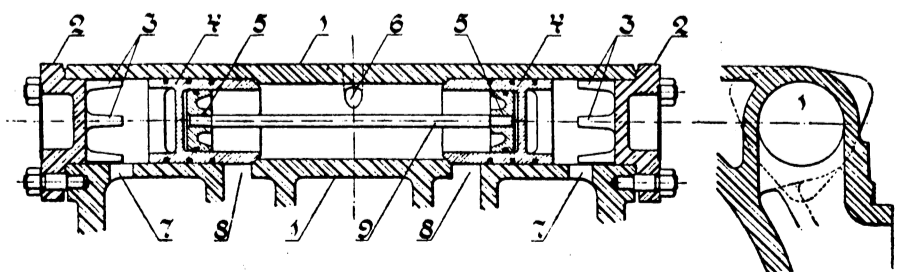
Flodins förenade säkerhets- och luftvägsventiler. Lok. litt. B och R. 1: 8.



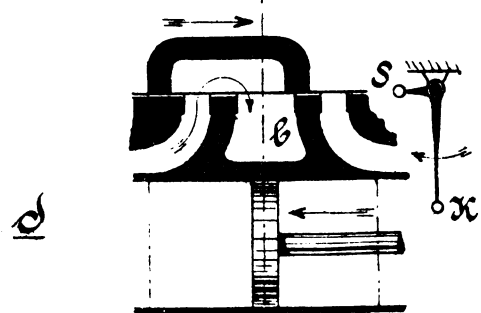
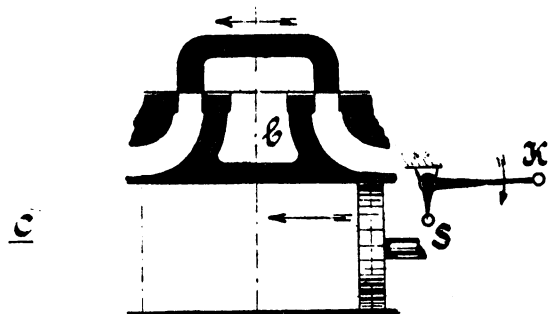
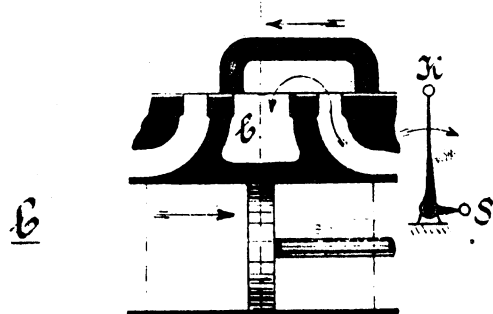
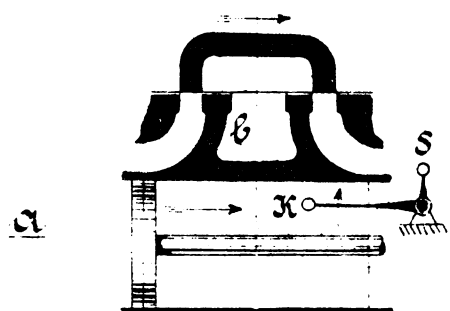
Luftvägskran. Lok. litt. Sb. 1: 8.



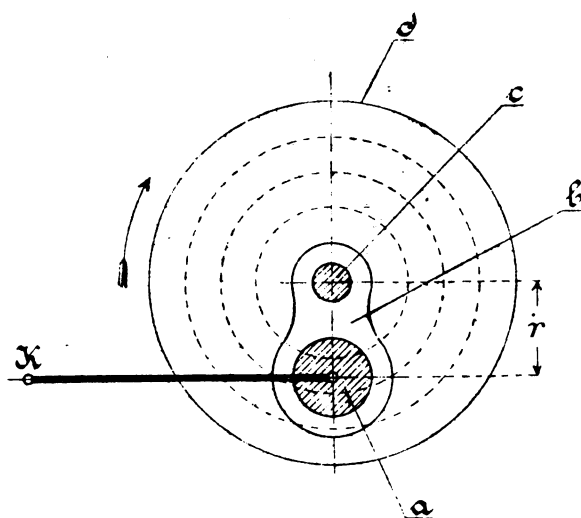
Utblåsningsventil. 1: 3.



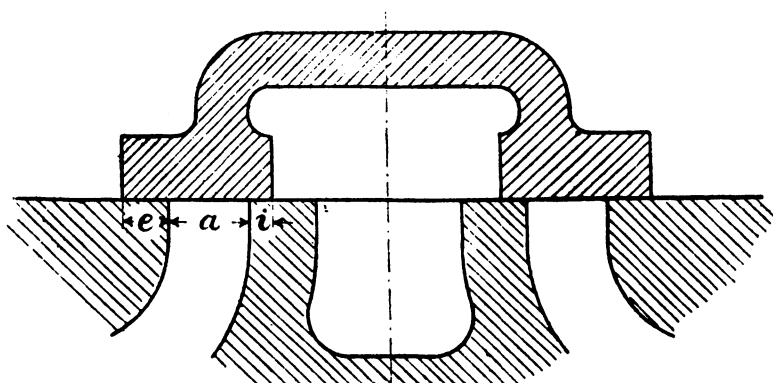
Luftvägsventiler. Lok. litt. M och T.



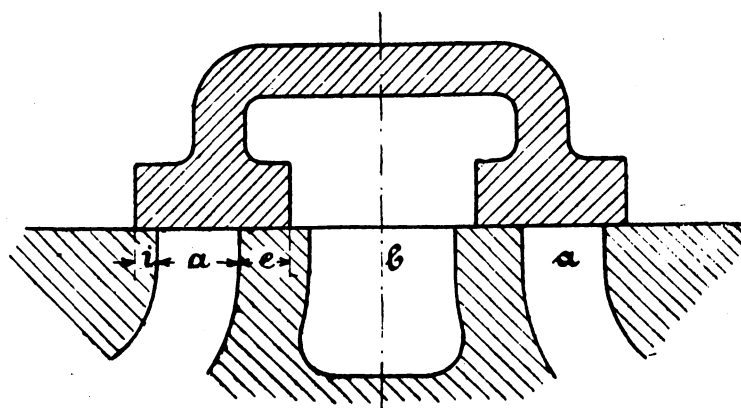
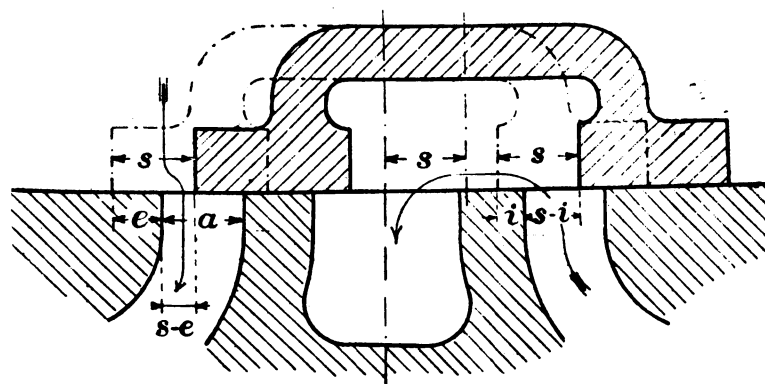
Normalslid.



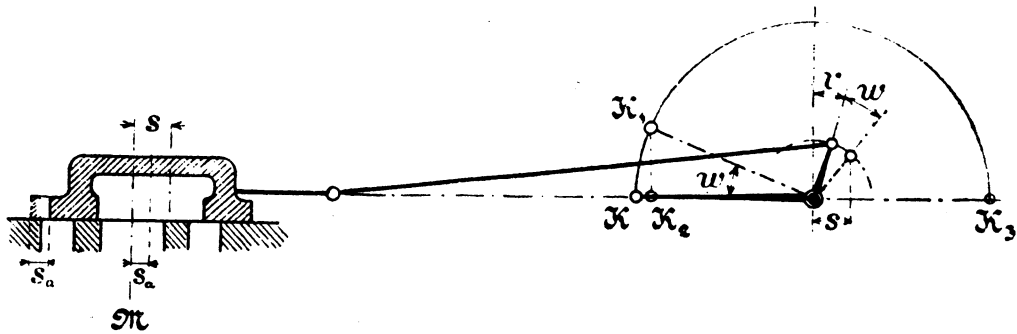
Excenterskiva



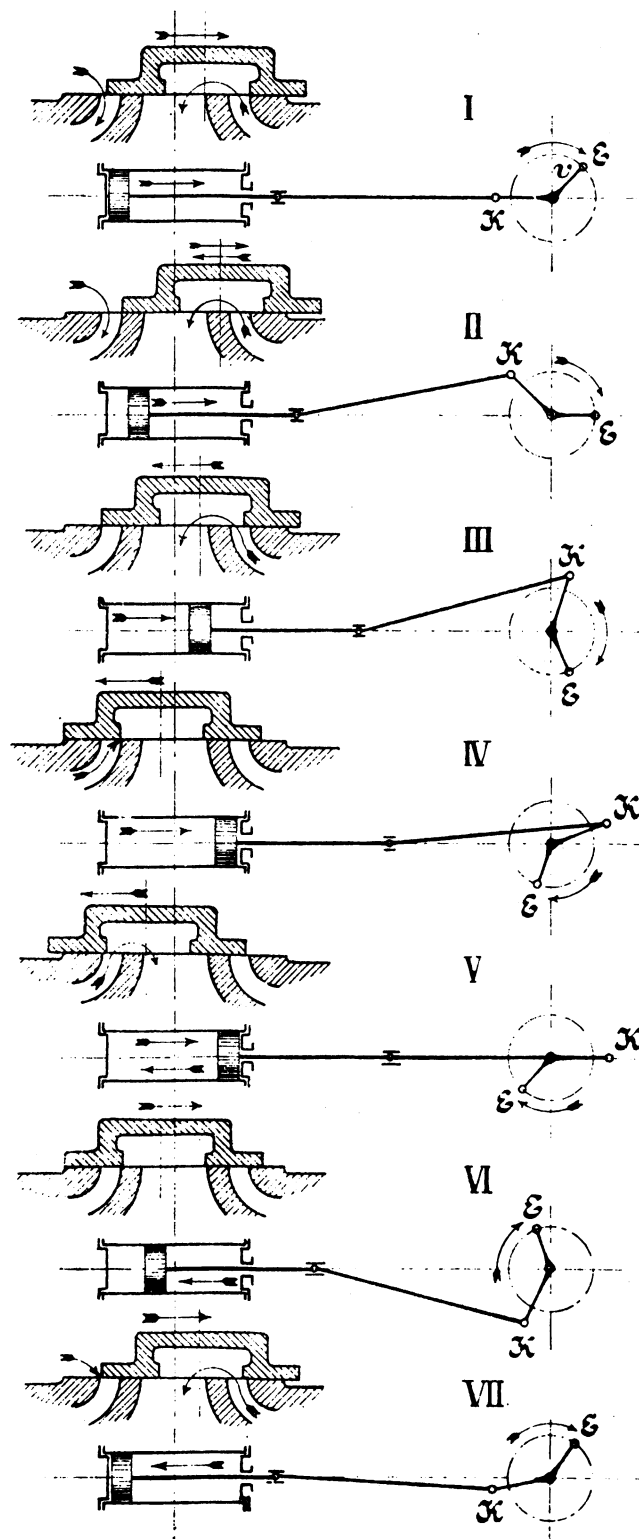
Slid med yttre och inre överskott.



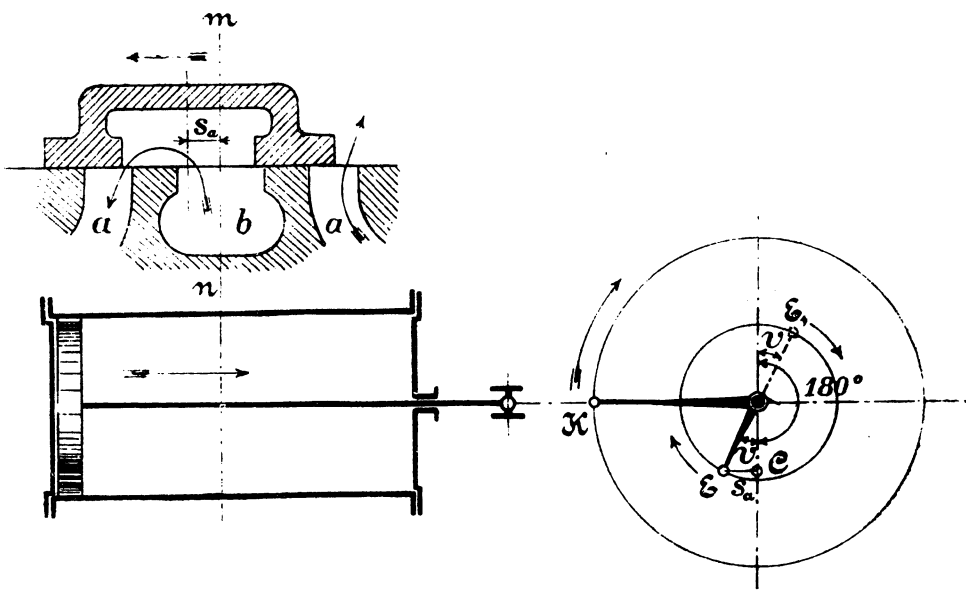
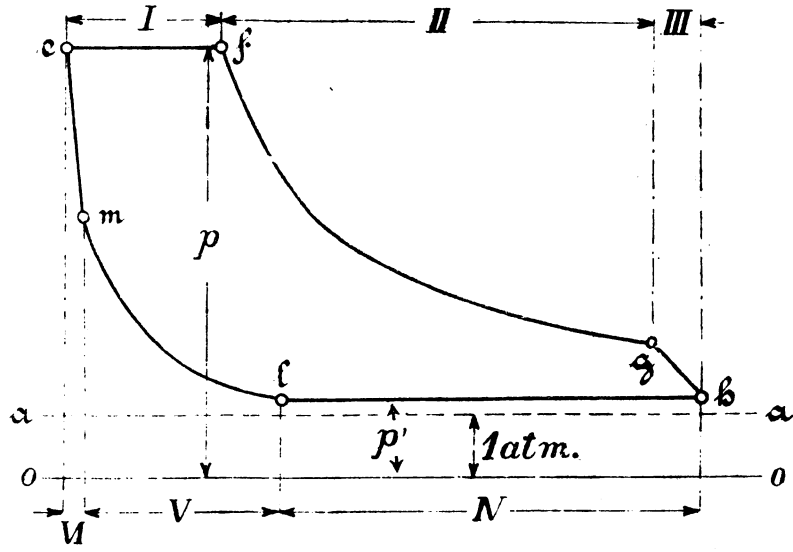
Slid med inre ånginströmning.



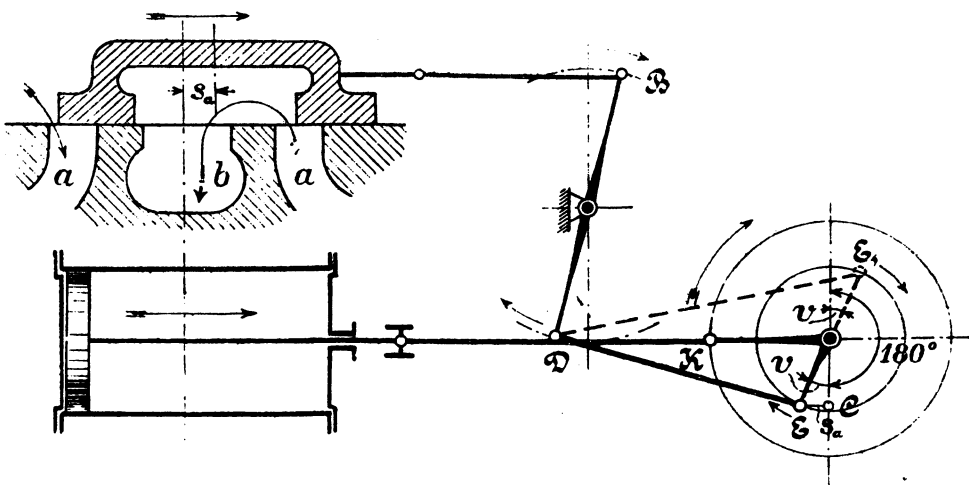
Försprångsvinkel och lineärt försprång.



Sliddiagram.

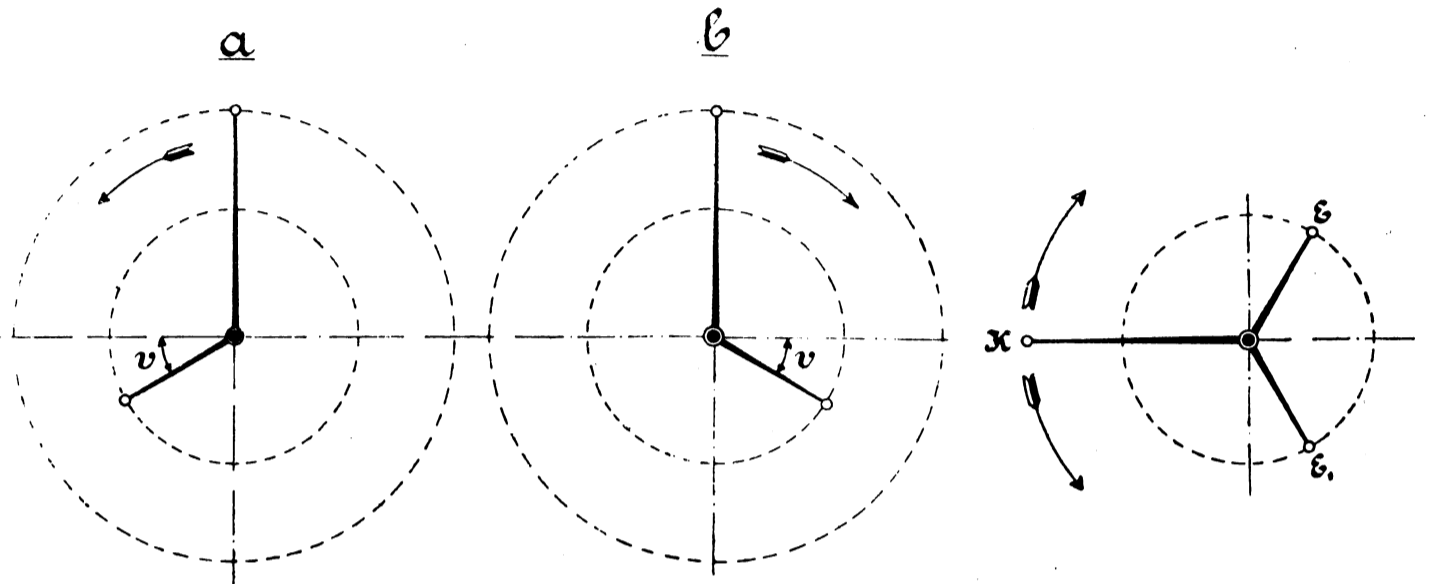
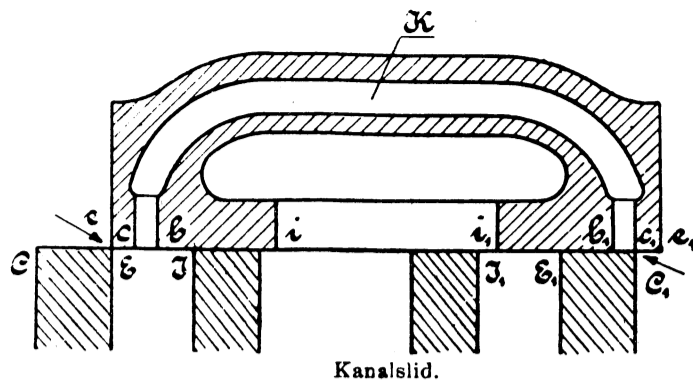


Försprångsvinkel vid slid med inre ångströmning.

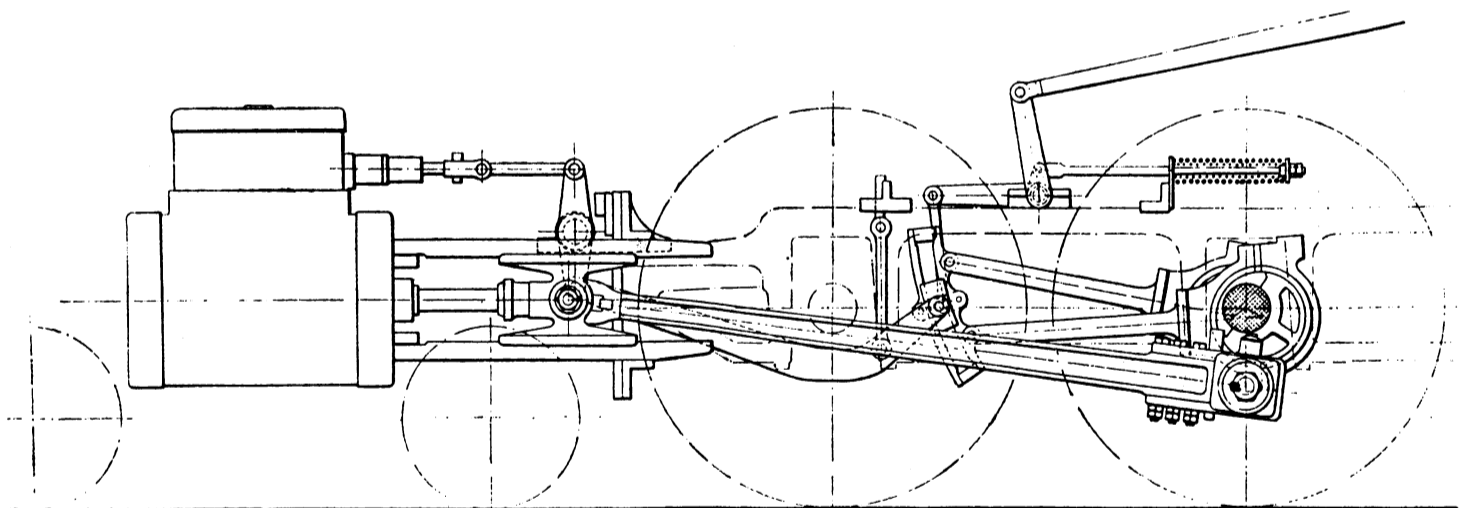


Försprångsvinkel vid slidrörelse med vickaxel.

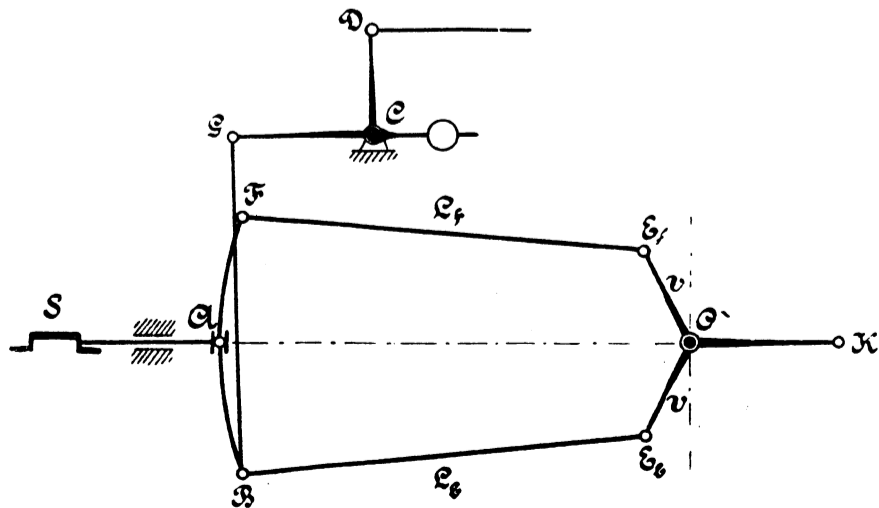




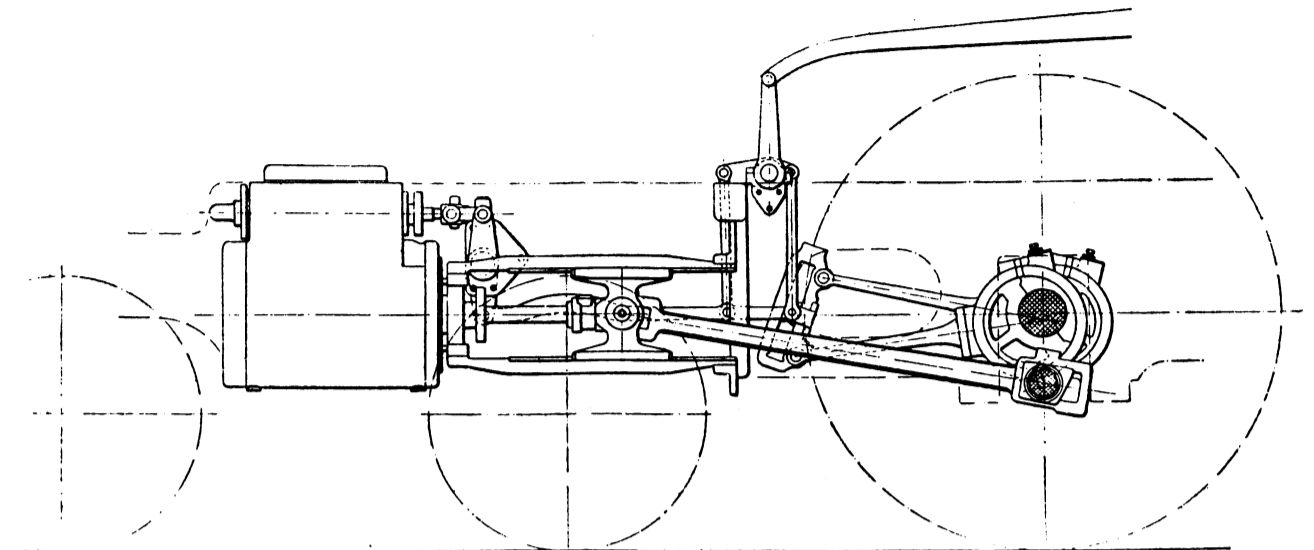
Framåt- och backexcenter.



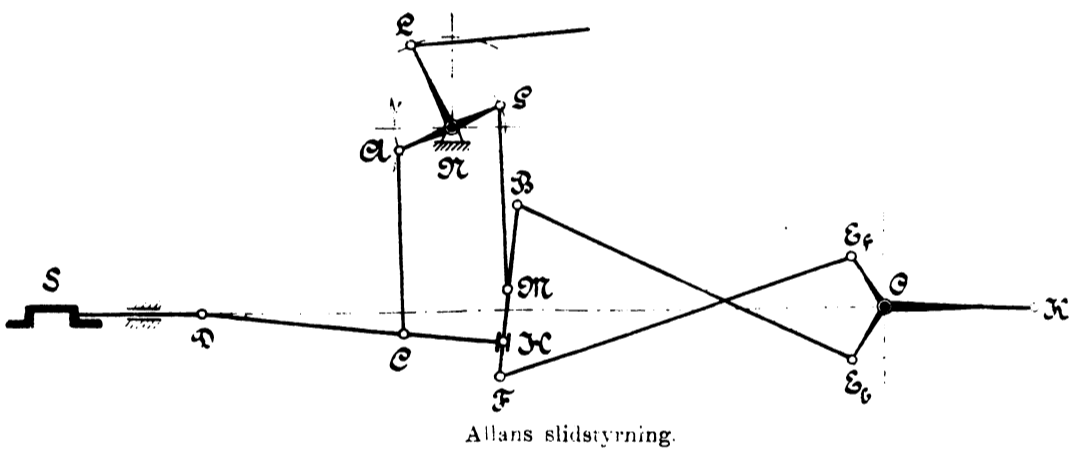
Stephensons slidstyrning. Lok. litt. T. 1:30.



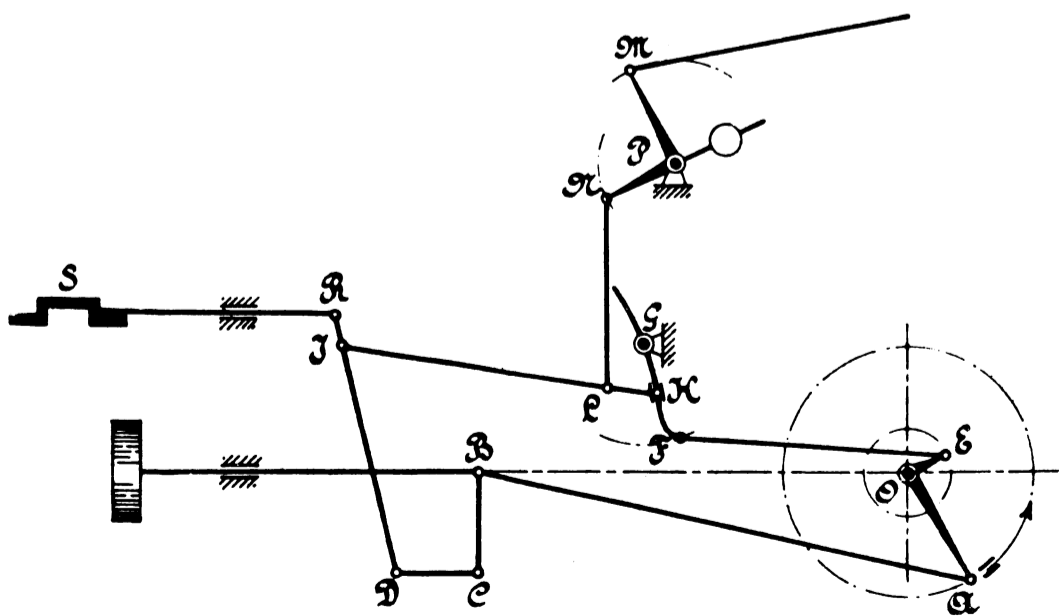
Stephensons slidstyrning, öppna stänger.



Allans slidstyrning. Lok. litt. Cc. 1: 80.



Allans slidstyrning.



Walschaerts slidstyrning.