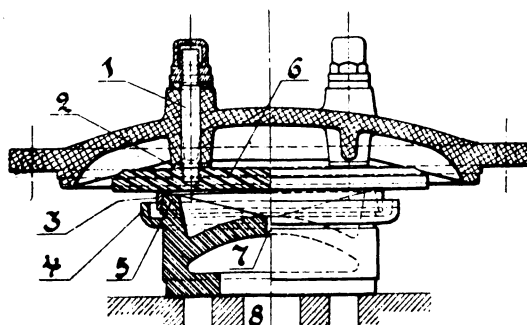
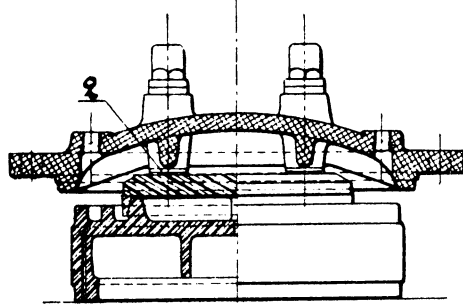
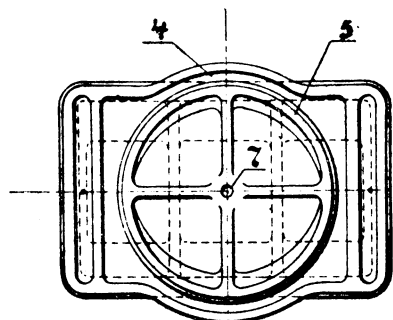
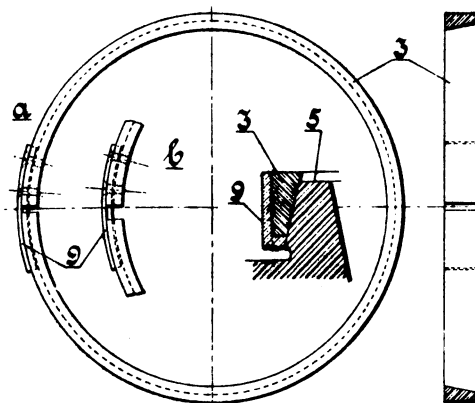


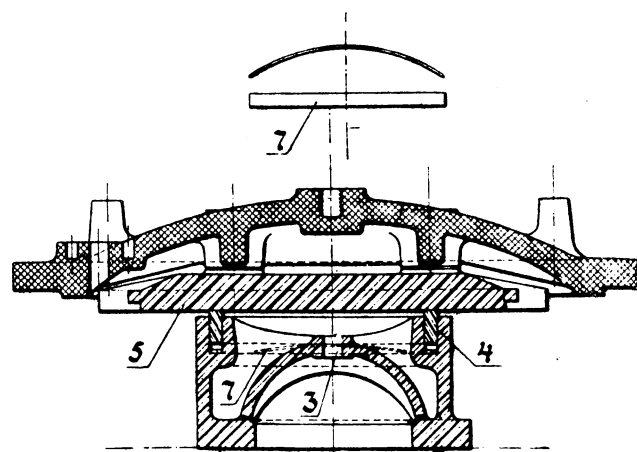
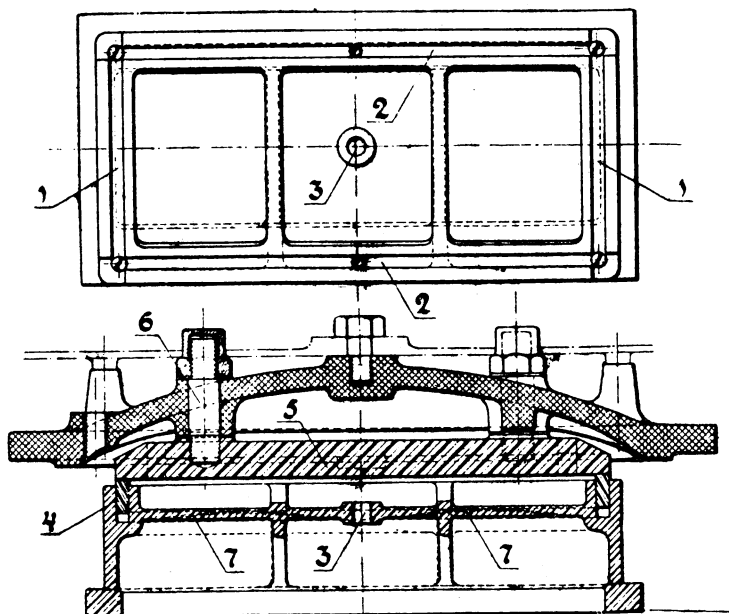
Slid med Turners avlastning. 1: 5.



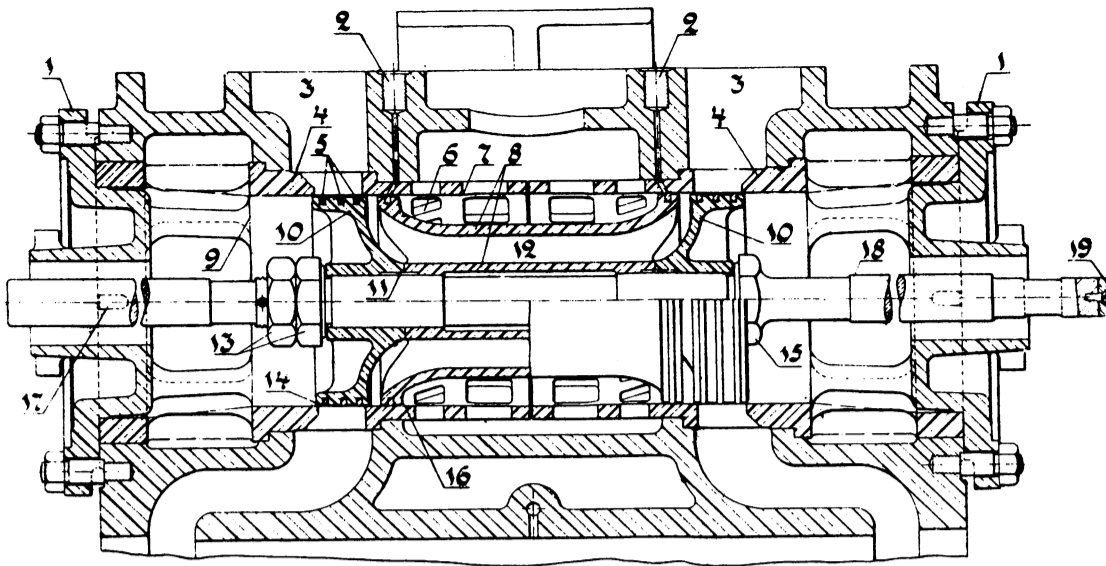
Slid med amerikansk (Thomas) avlastning. 1: 10.



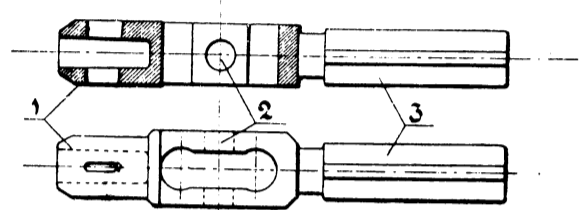
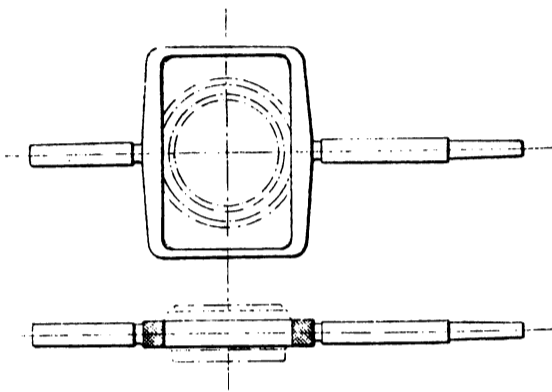
Avlastningsring till slid med amerikansk avlastning. 1: 3 och 1: 6.



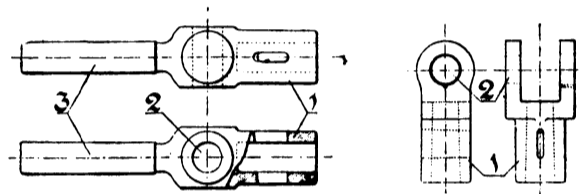
Slid med Richardsons avlastning.



Kolvslid med smala tätningsringar (Statens järnvägars nyare kolvslid). 1: 8.

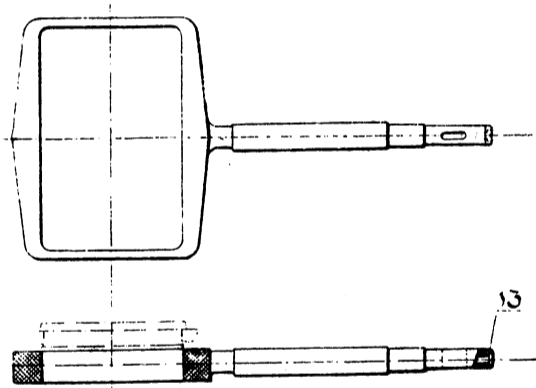


Slidstångshuvud. 1: 10.

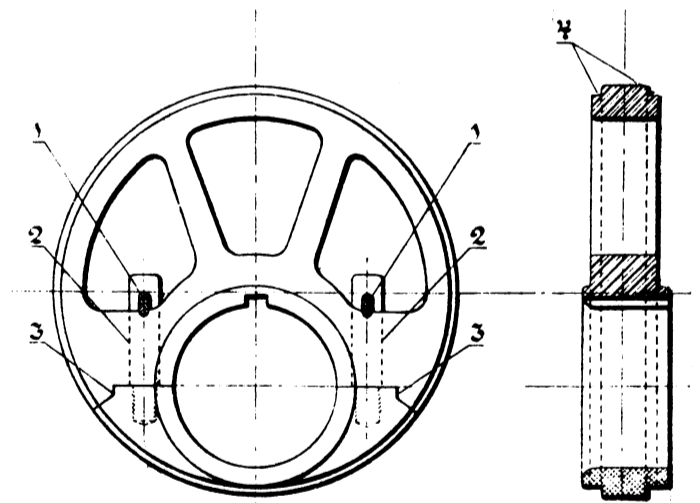


Slidstångshuvud. 1: 10.

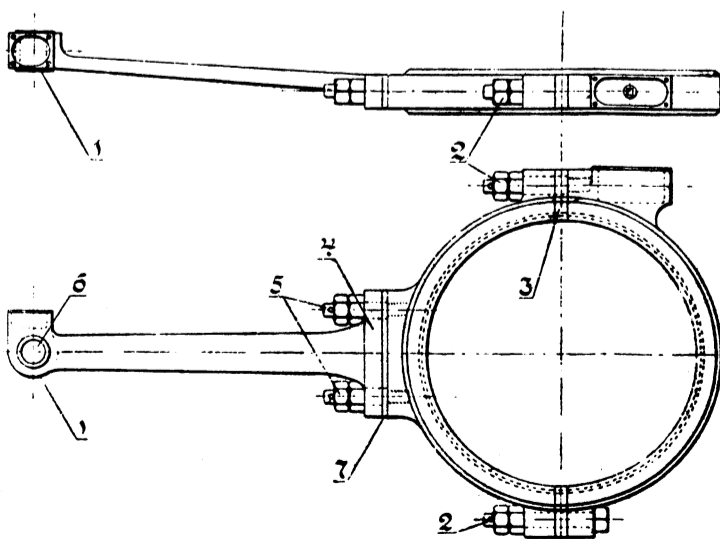
Slidstångshuvud. 1: 10.



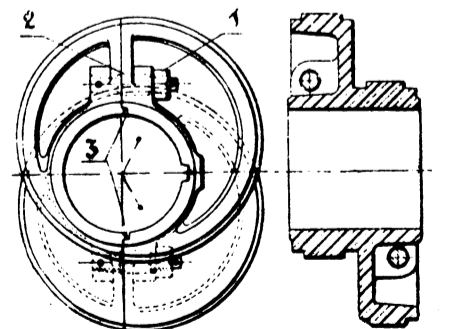
Slidstång med bygel. 1: 15.



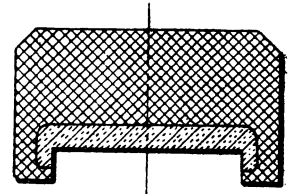
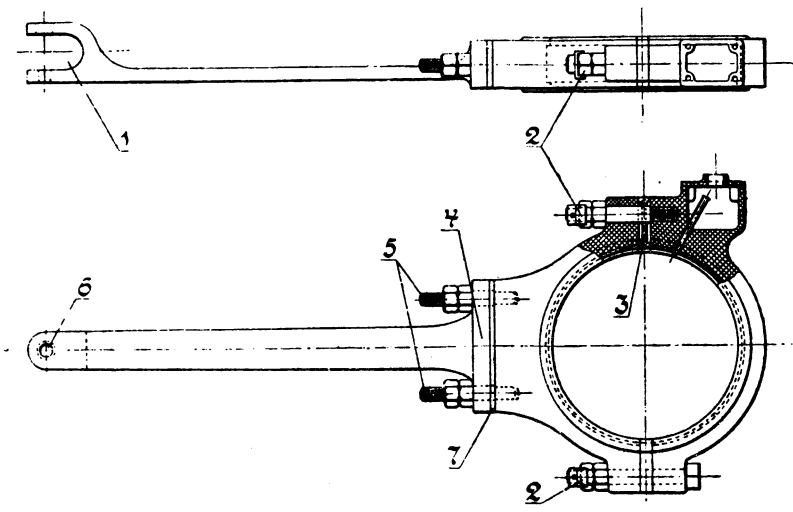
Excenterskiva. 1: 10.



Excenterring med stång. 1: 15.

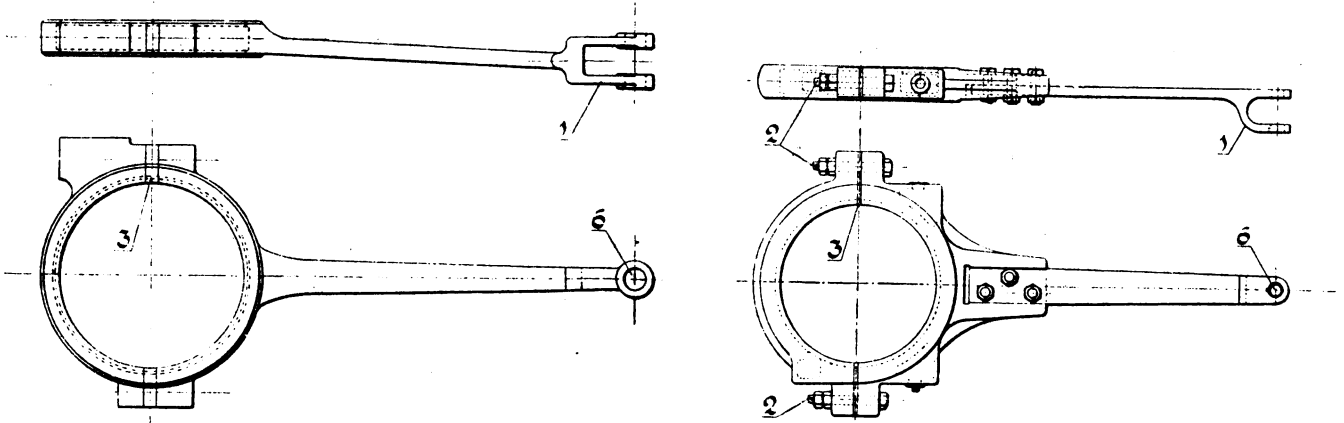


Sammanjutna excenterskivor 1: 10.



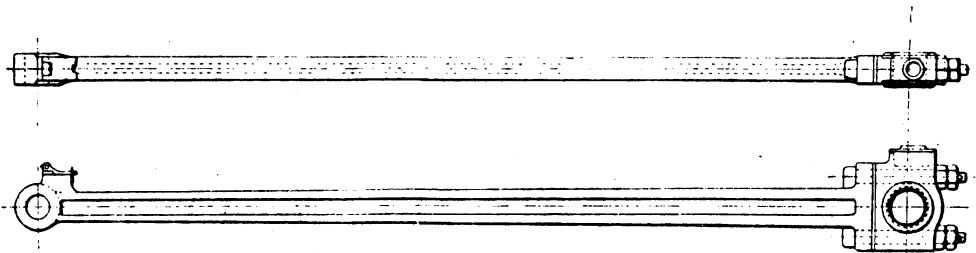
Skärning av excenterring. 1: 2.

Excenterring med stång. 1: 15.

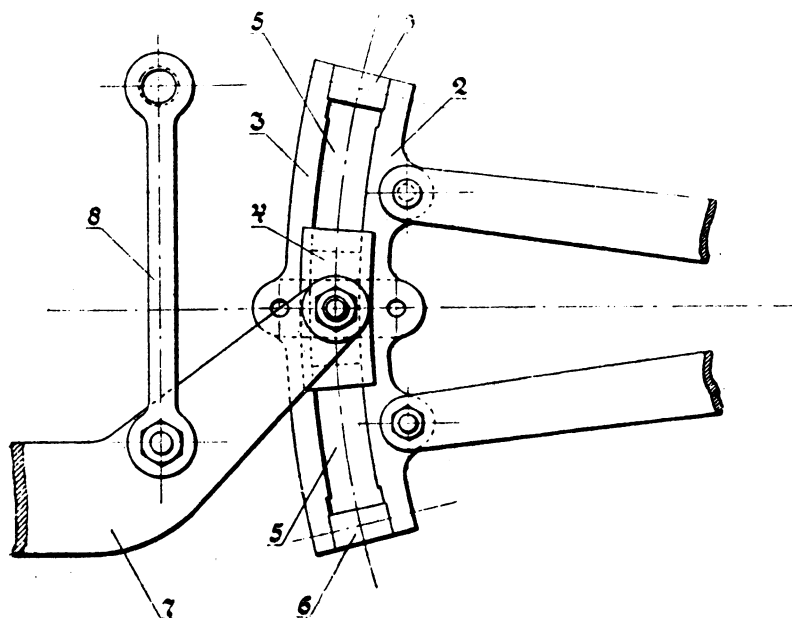


Excenterring med stång. 1: 15.

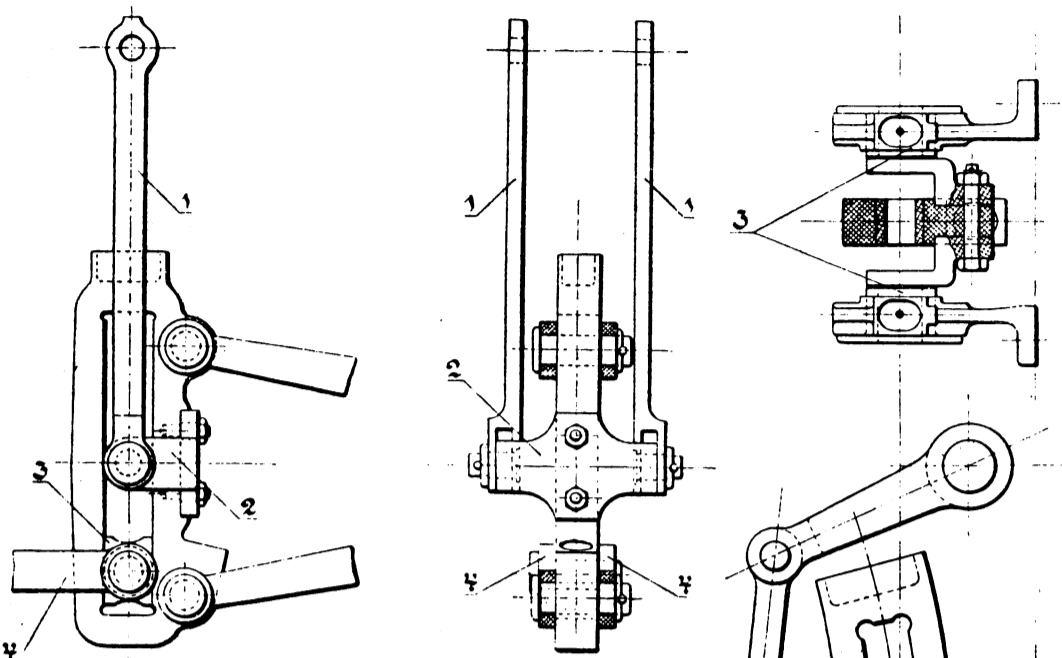
Excenterring med stång. 1: 15.



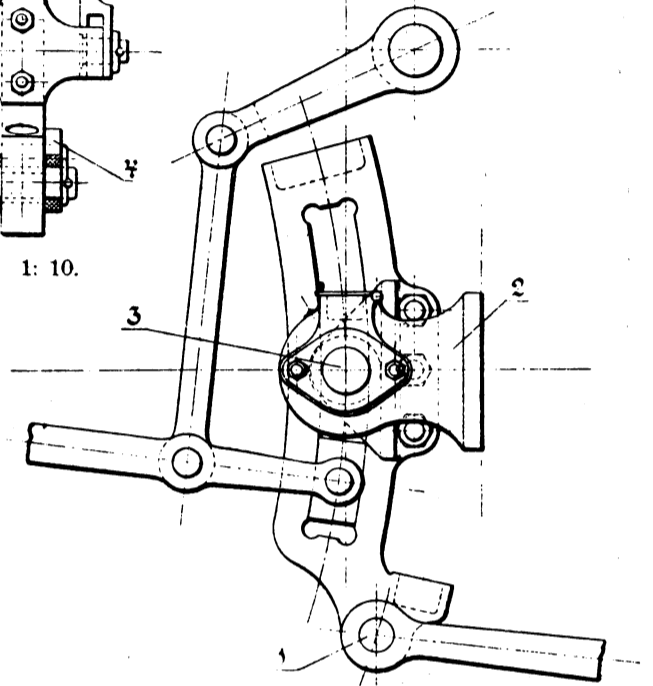
Excenterstång. 1: 15.



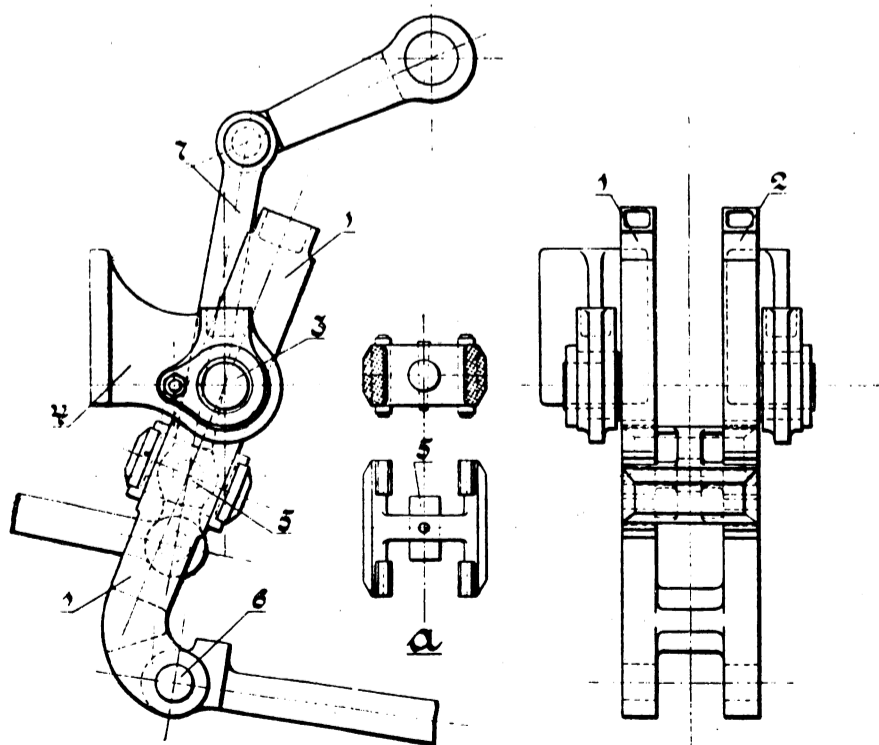
Kuliss för Stephensons slidstyrning. 1: 10.



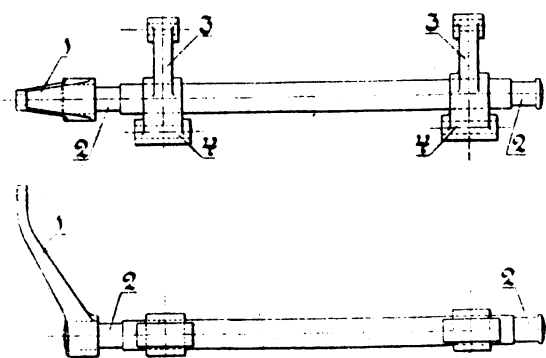
Kuliss för Allans slidstyrning. 1: 10.



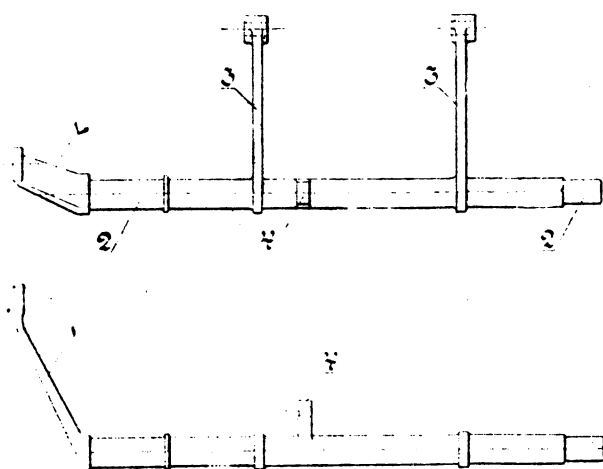
Kuliss för Walschaerts slidstyrning. 1: 10.



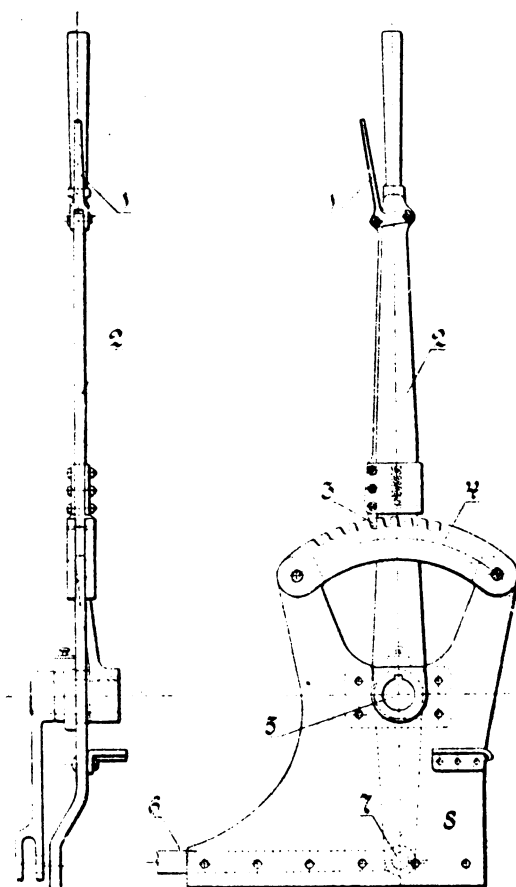
Kuliss för Helmholtz' slidstyrning. 1: 10.



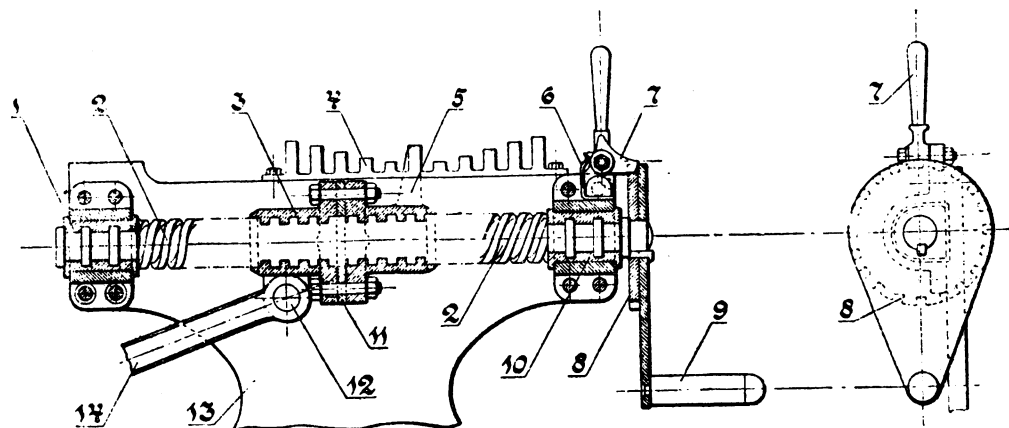
Slidomkastningsaxel. 1: 20.



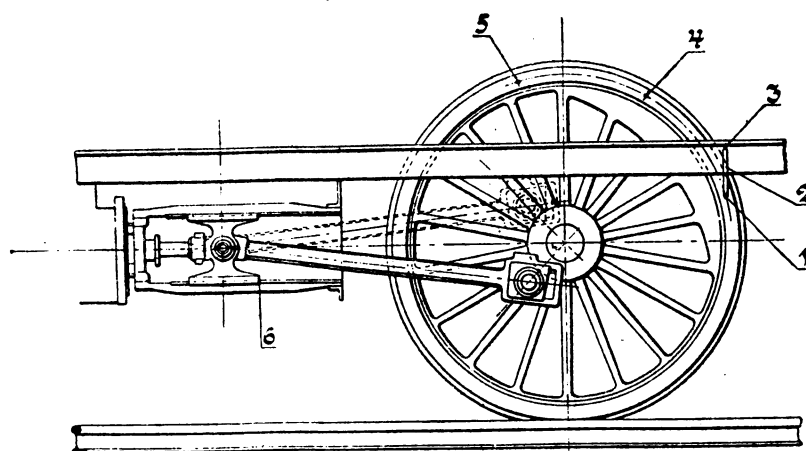
Slidomkastningsaxel. 1: 20.



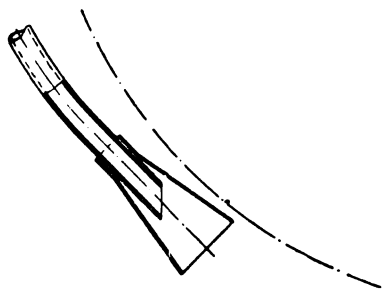
Omkastningspak. 1: 15.



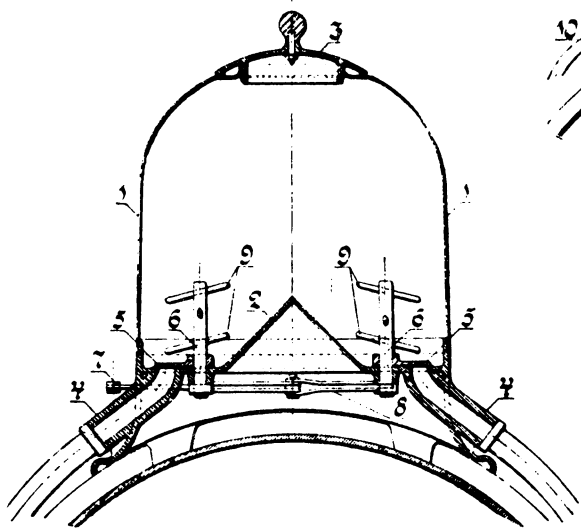
Omkastningskruv. 1: 10.



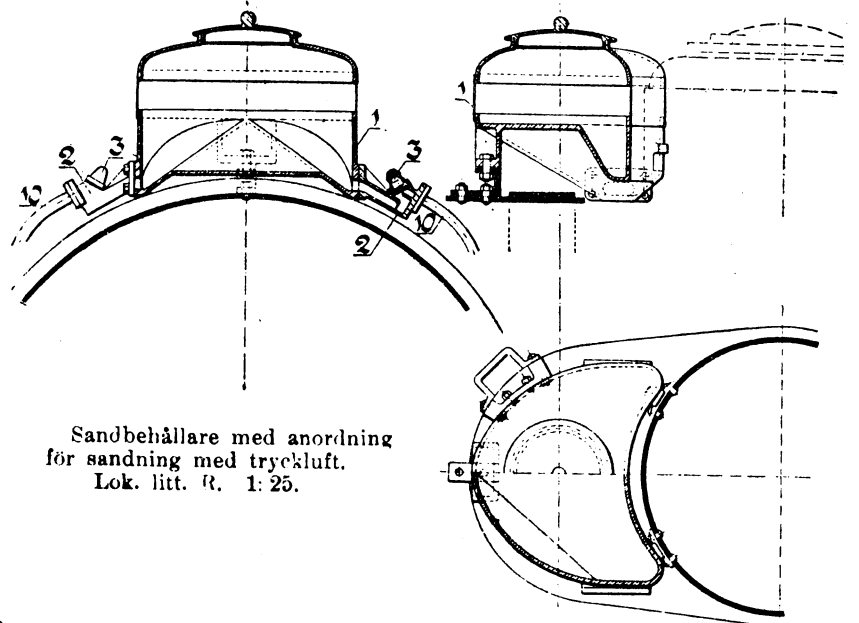
Slidstyrningens reglering.



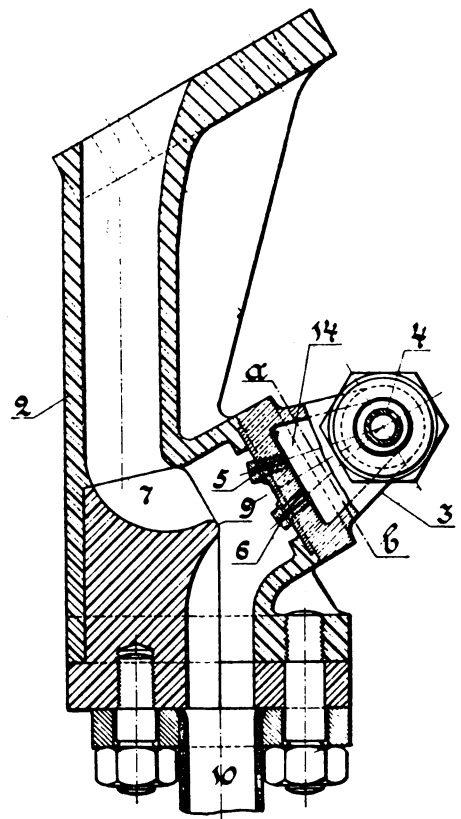
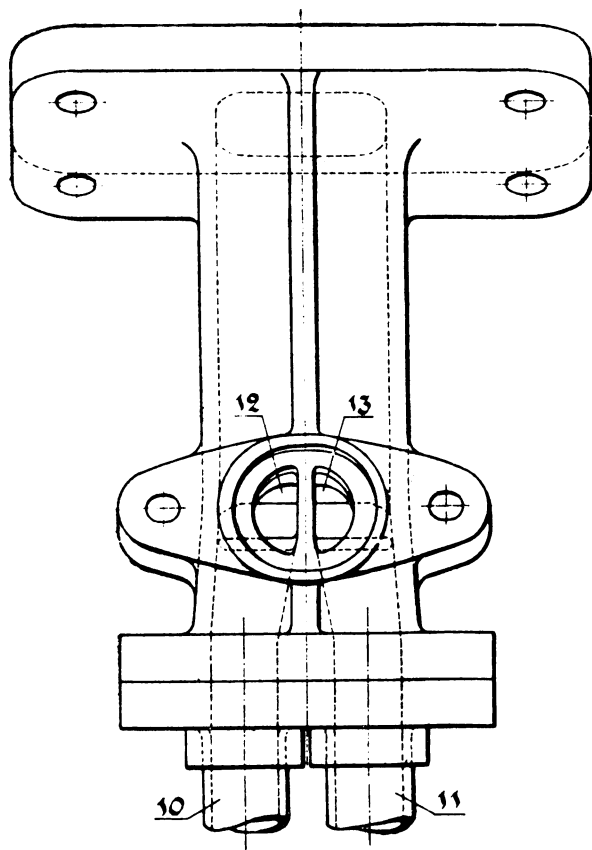
Skyddsträtt & sandrör.



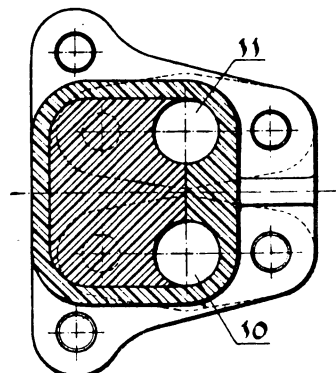
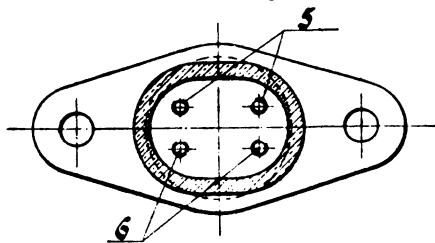
Fristående sandbehållare på rundpannan. 1:15.



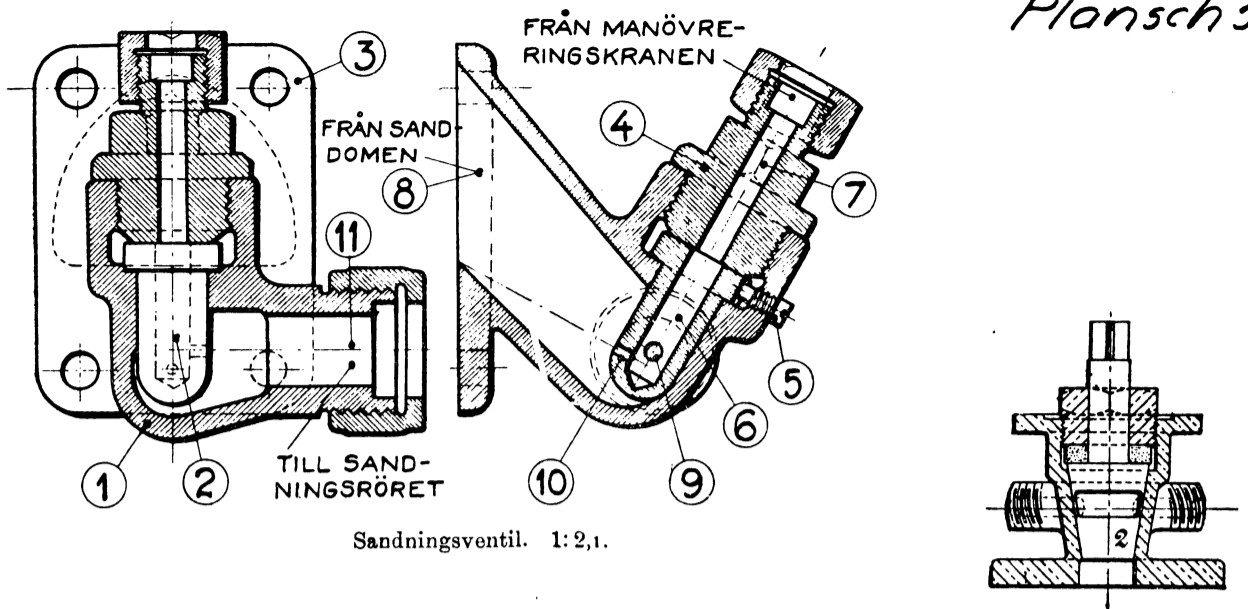
Sandbehållare med anordning för sandning med tryckluft.
Lok. litt. R. 1:25.



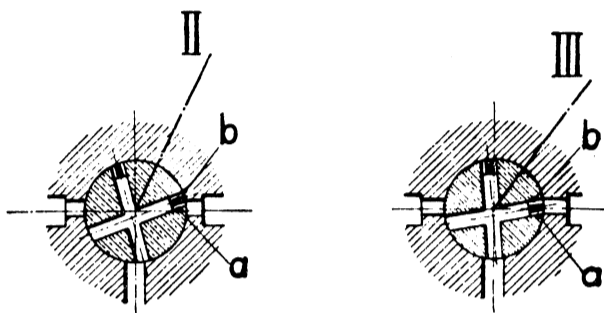
Skärning α - b



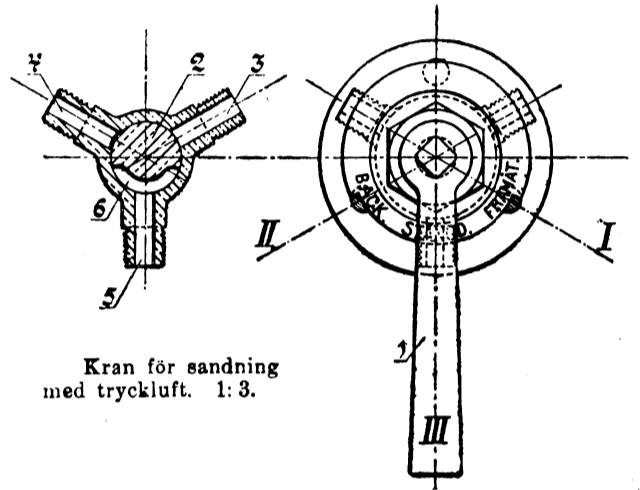
Sandtrappa med munstycke för sandning med tryckluft. 1:3.



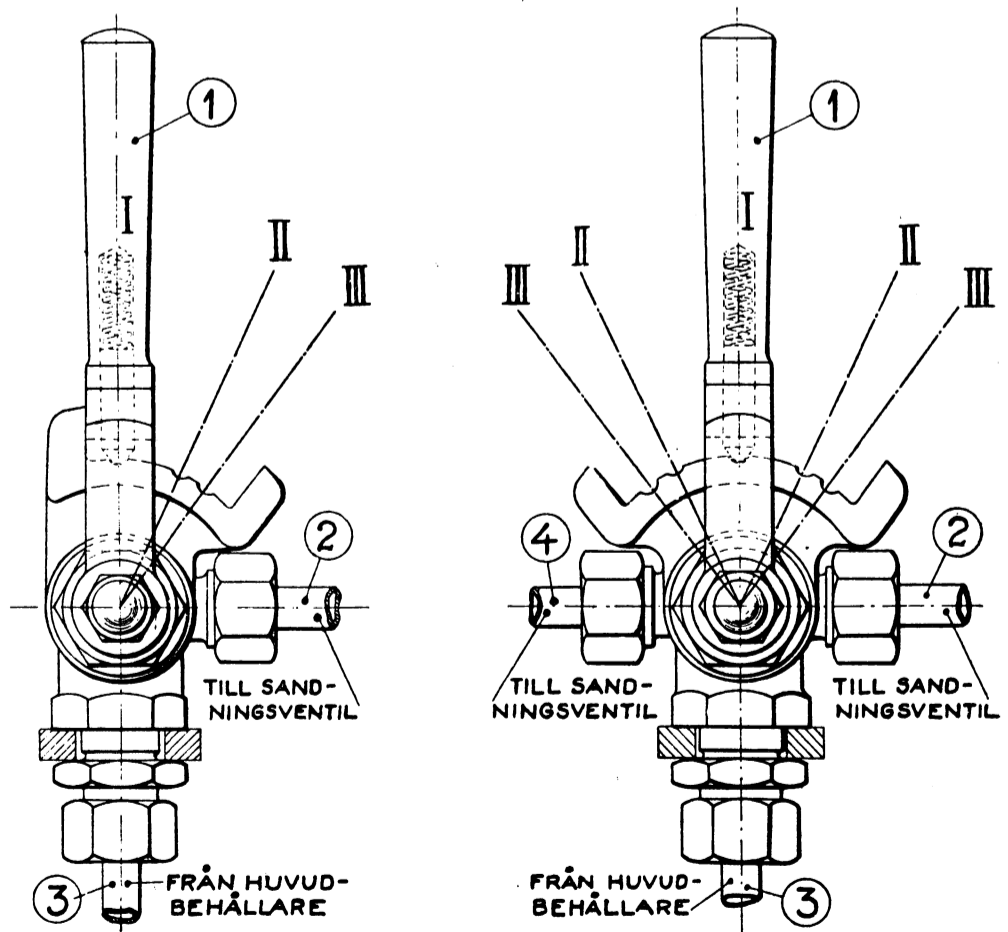
Sandningsventil. 1:2,1.



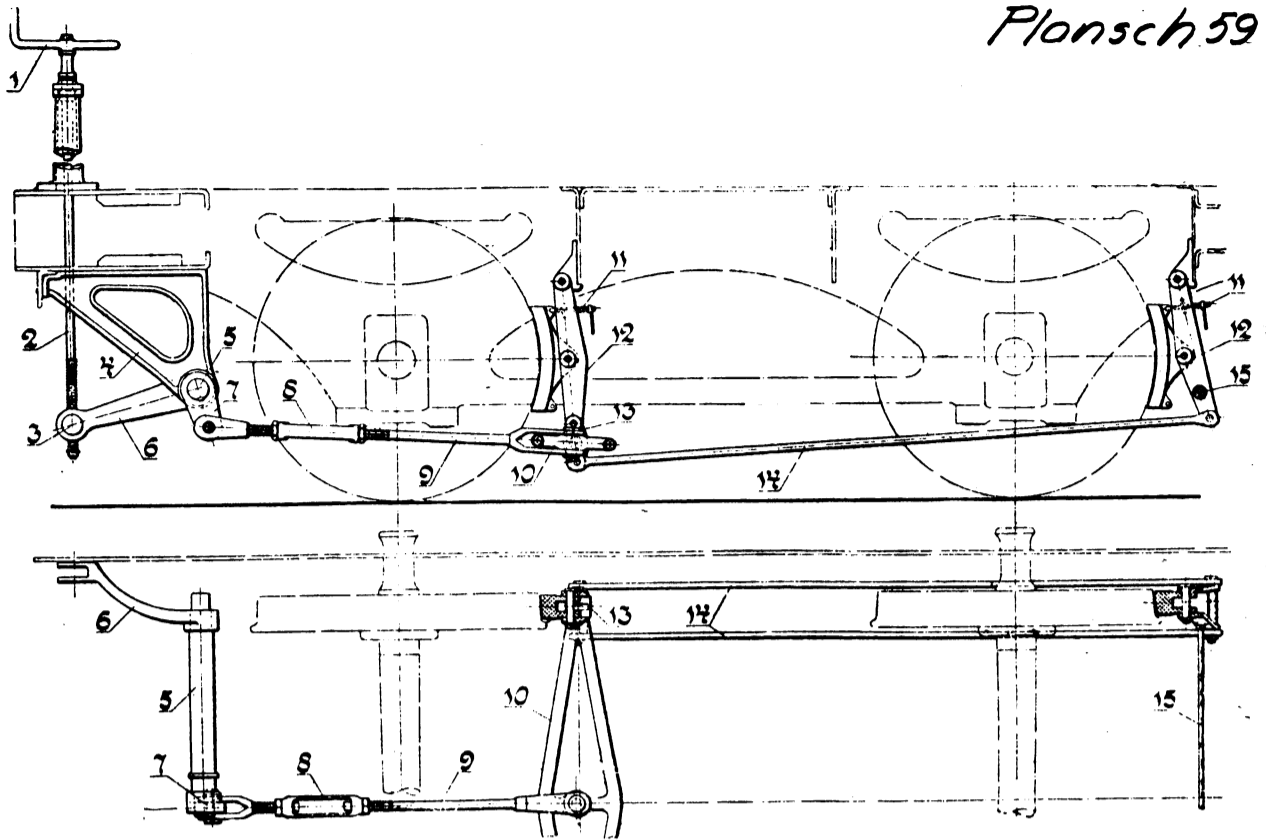
Kikens ställning vid kranlägena II (till vänster) och III (till höger).



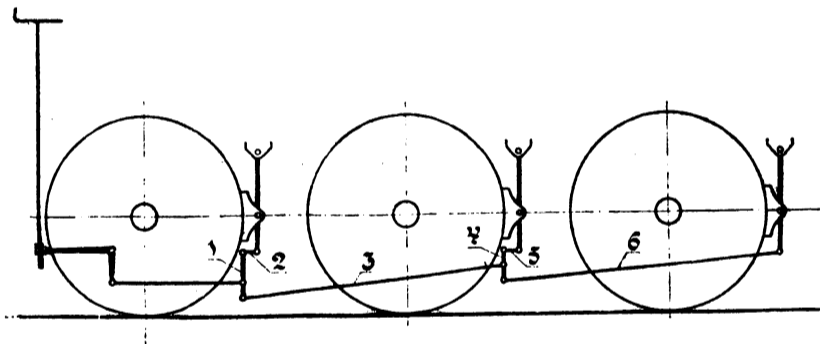
Kran för sandning med tryckluft. 1:3.



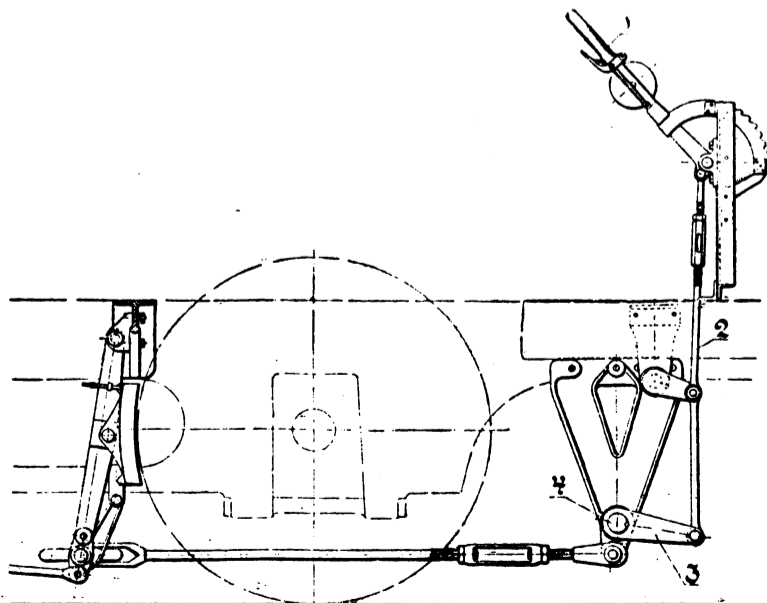
Manövreringskranar för tryckluftsandning. 1:2,5.



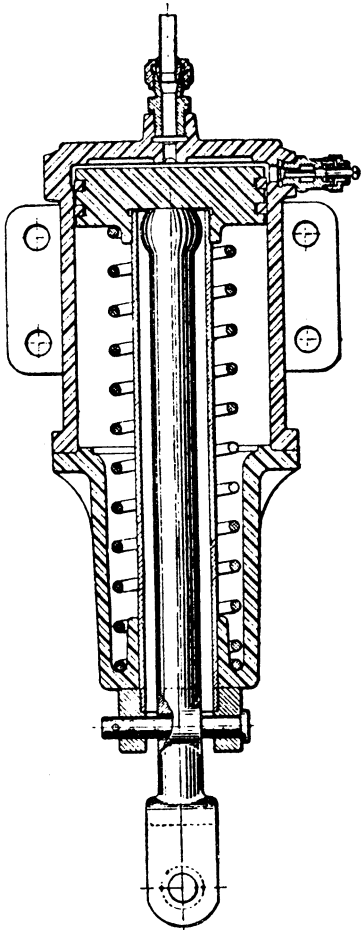
Skrubbroms för tvåaxlig tender. 1:30.



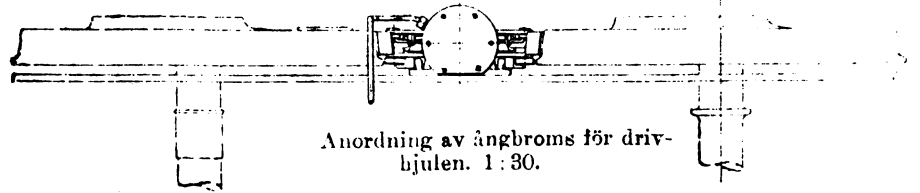
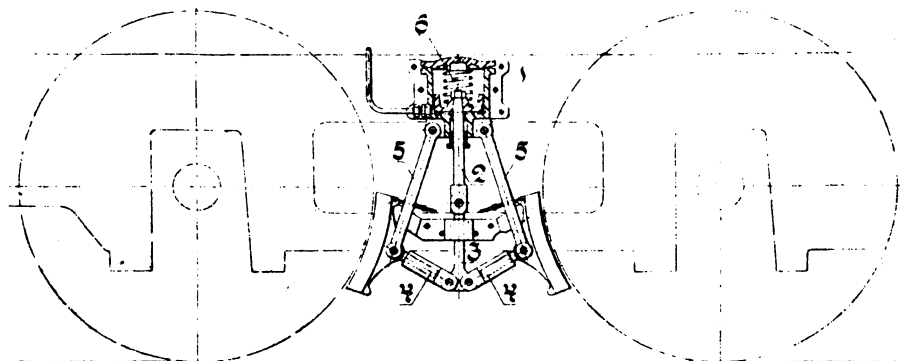
Bromsanordning å treaxlig tender.



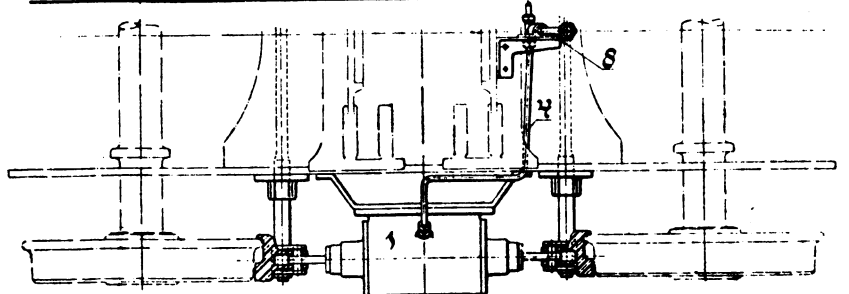
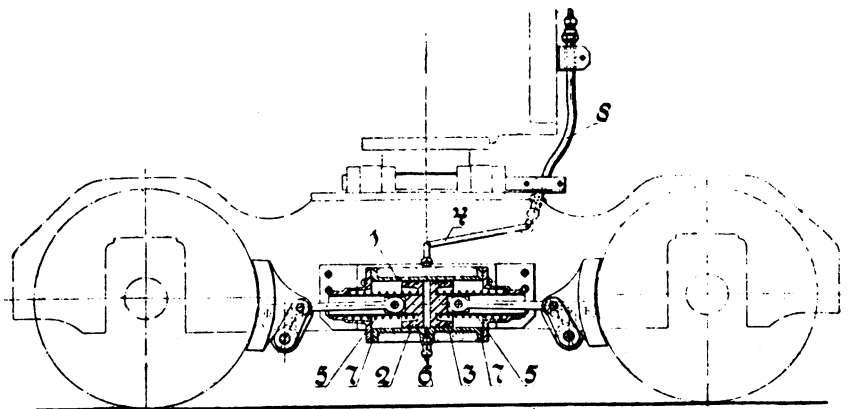
Exters hävstångsbroms. 1:30.



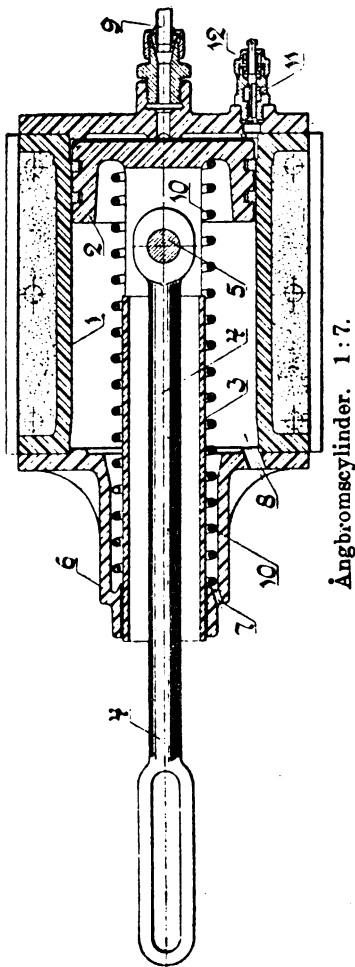
Ångbromscynder. 1:7.



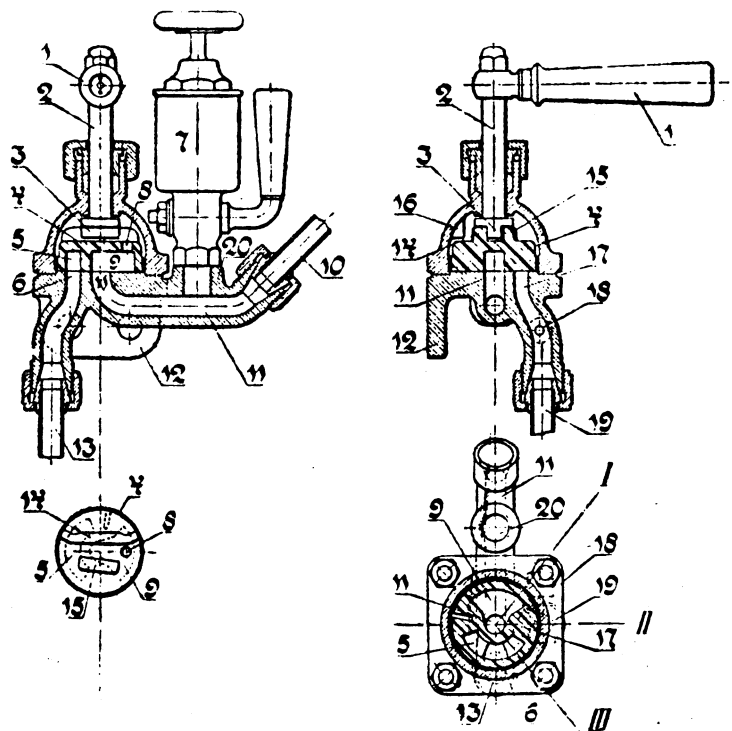
Anordning av ångbroms för drivhjulen. 1:30.



Ångbroms för boggin till lok. litt. Tb. 1:25.



Ångbromscynder. 1:7.



Ångbromsventil. 1:5.