

# Boda: Über den Anschluss von Blocklinien an Stellwerksanlagen

## mit elektrischem Weichenstraßen-Verschlusse

Abb. 1.

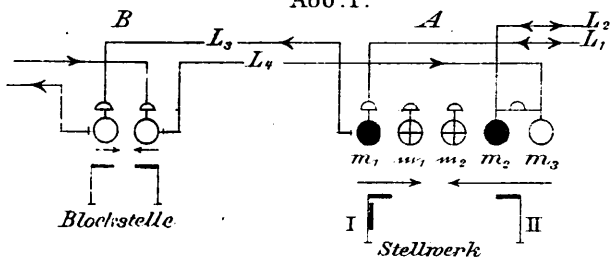


Abb. 3.

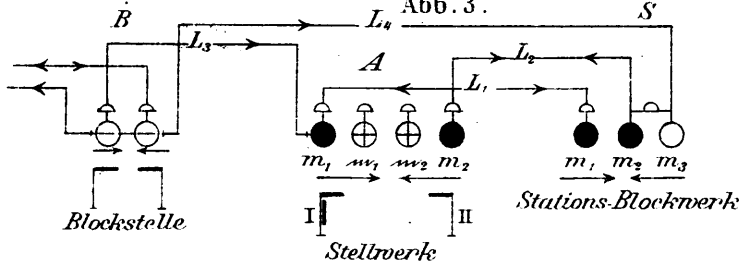


Abb. 2.

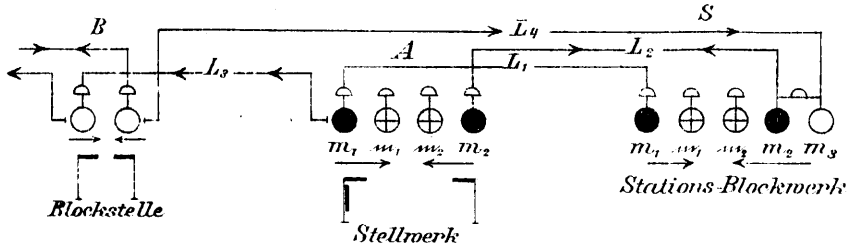


Abb. 4.

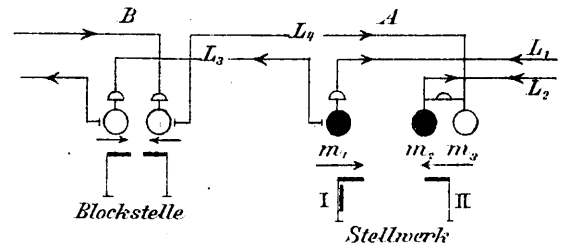


Abb. 5.

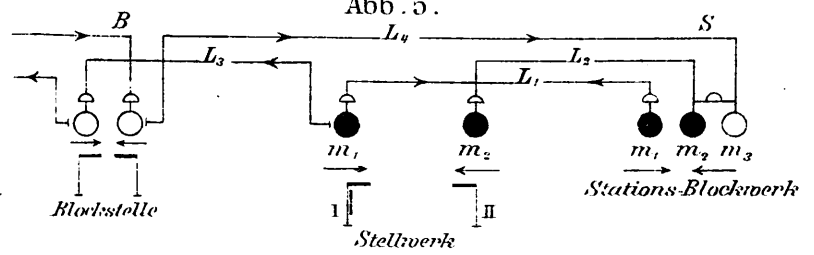


Abb. 6.

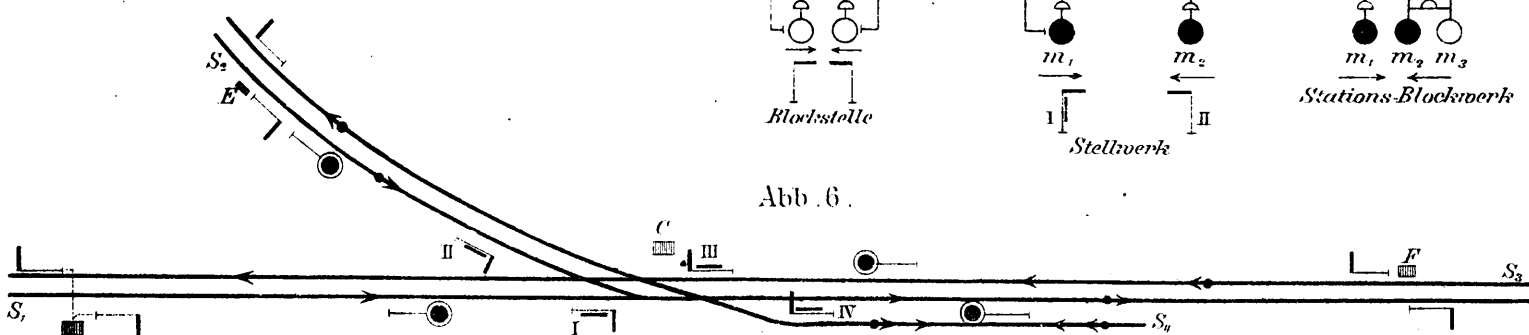


Abb. 7.

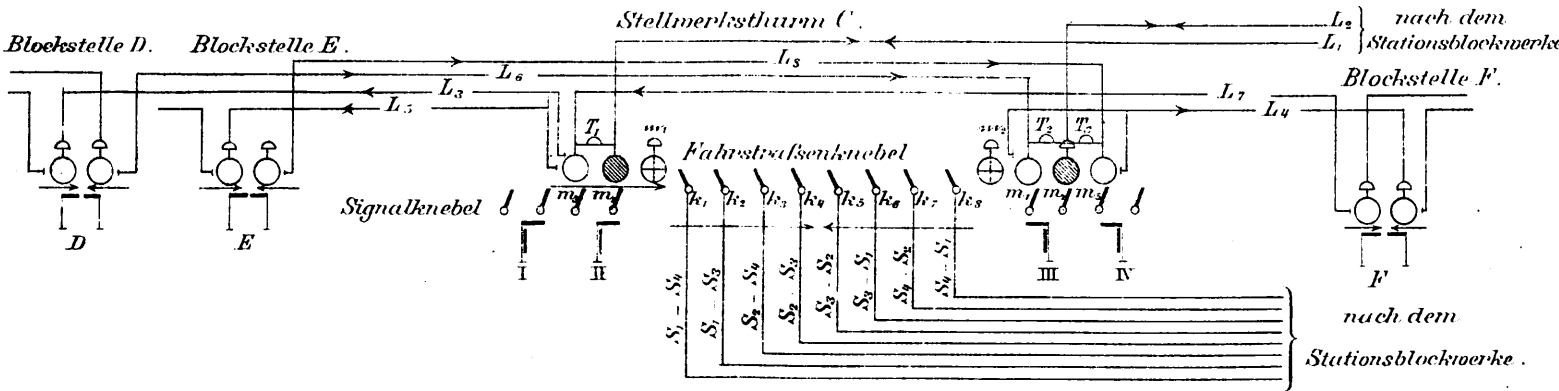
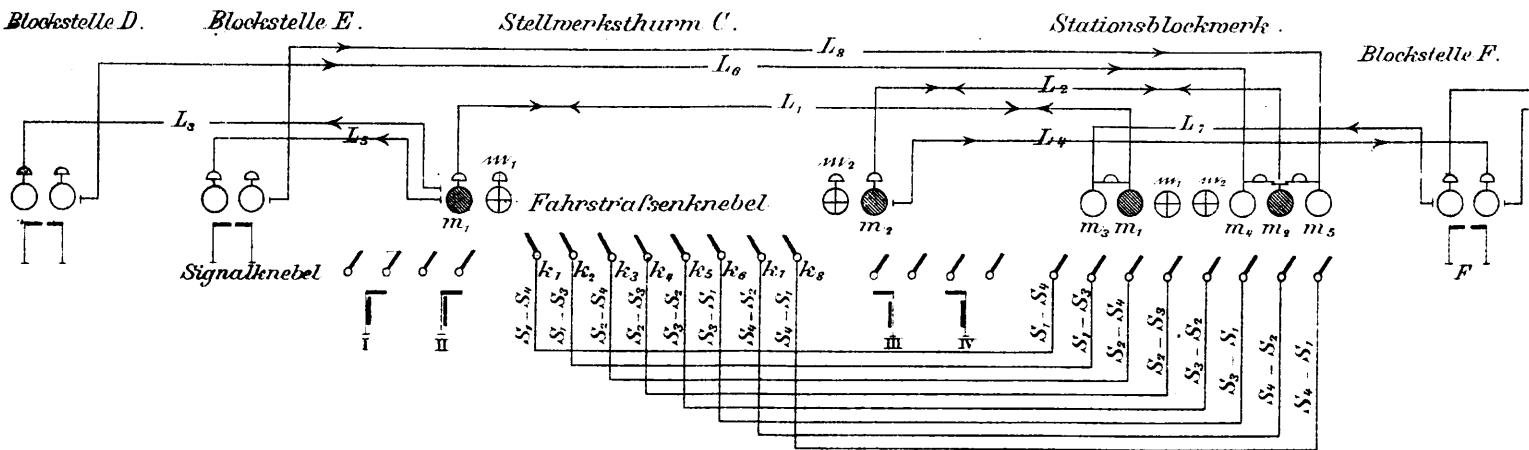


Abb. 8.



# Boda: Über den Anschluß von Blocklinien an Stellwerksanlagen mit elektrischem Weichenstraßen-Verschluß.

Abb. 9.

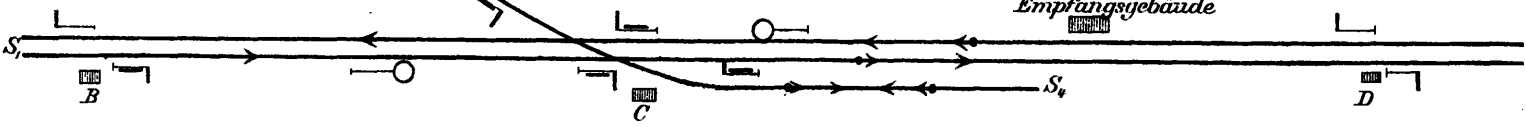
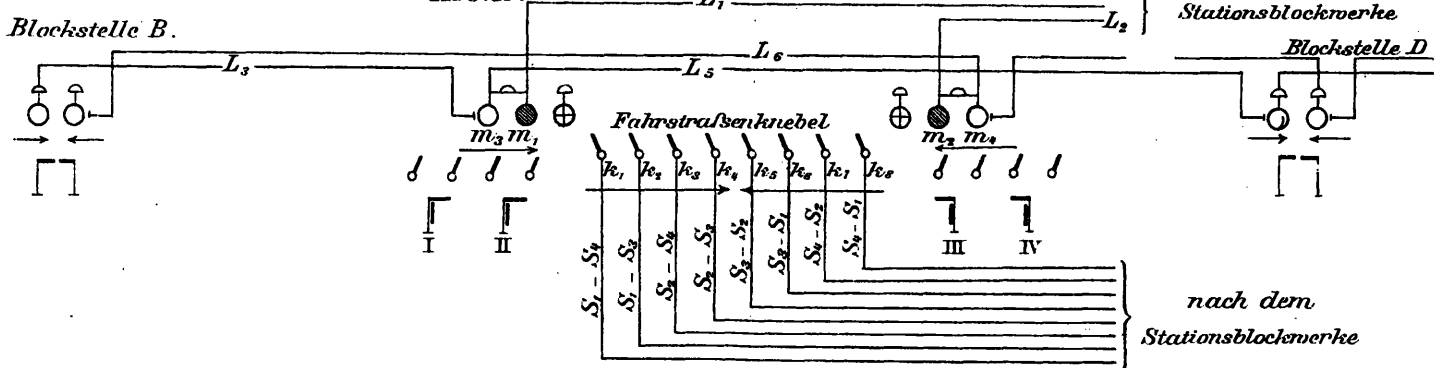


Abb. 10. Stellwerksturm C.



Stellwerksturm C. Abb. 11.

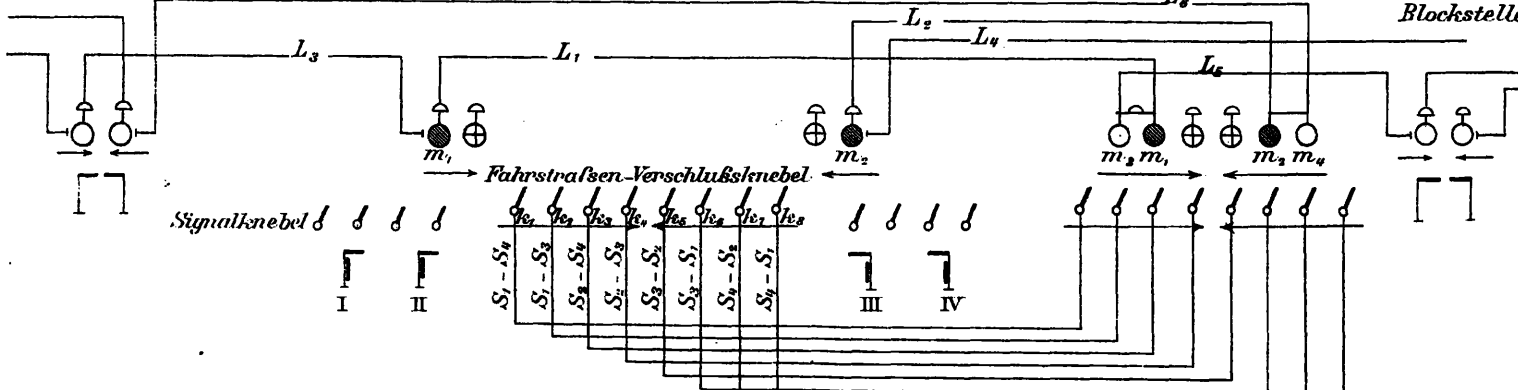


Abb. 12.

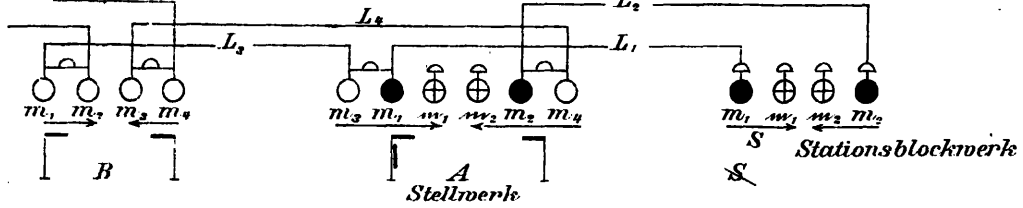


Abb. 16.

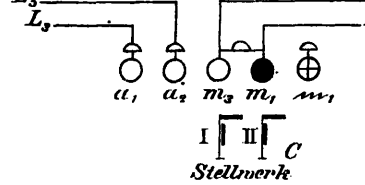


Abb. 13.

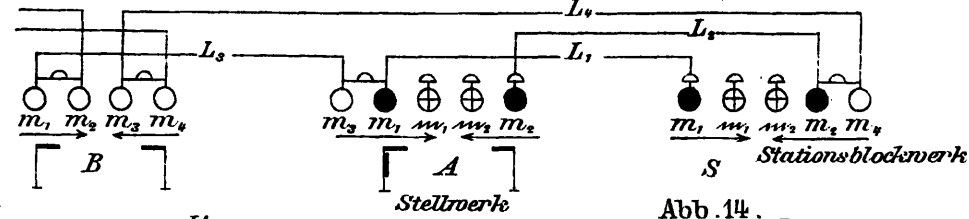


Abb. 17.

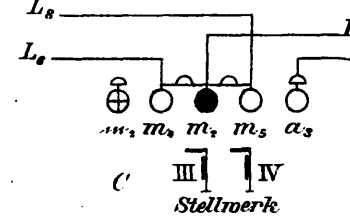


Abb. 14.

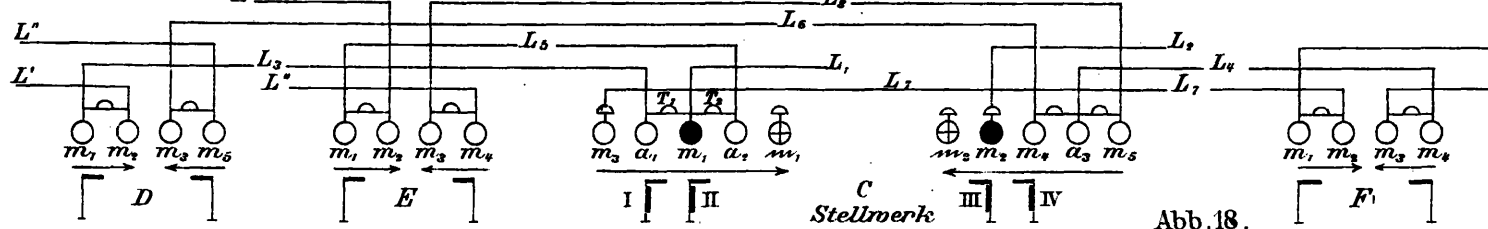


Abb. 15.

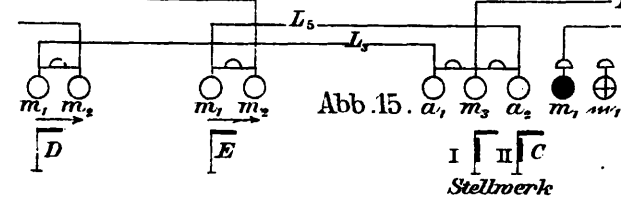


Abb. 18.

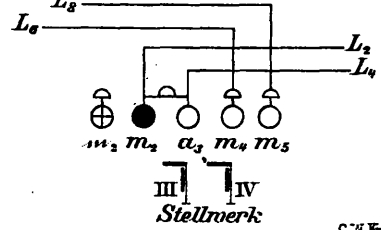


Abb. 1-6. Boda: Über den Anschluß von Blocklinien an Stellwerksanlagen mit elektrischem Weichenstrafsen-Verschlusse.

Abb. 1.

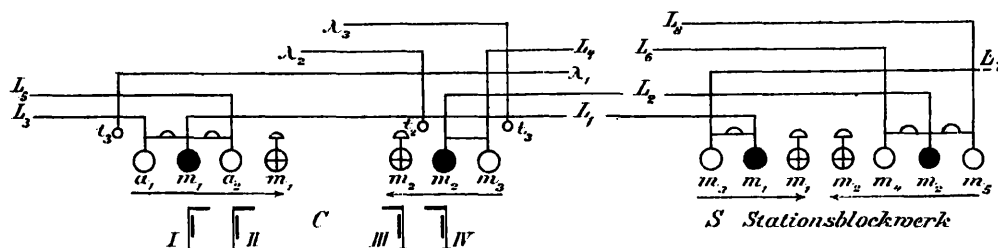


Abb. 2.

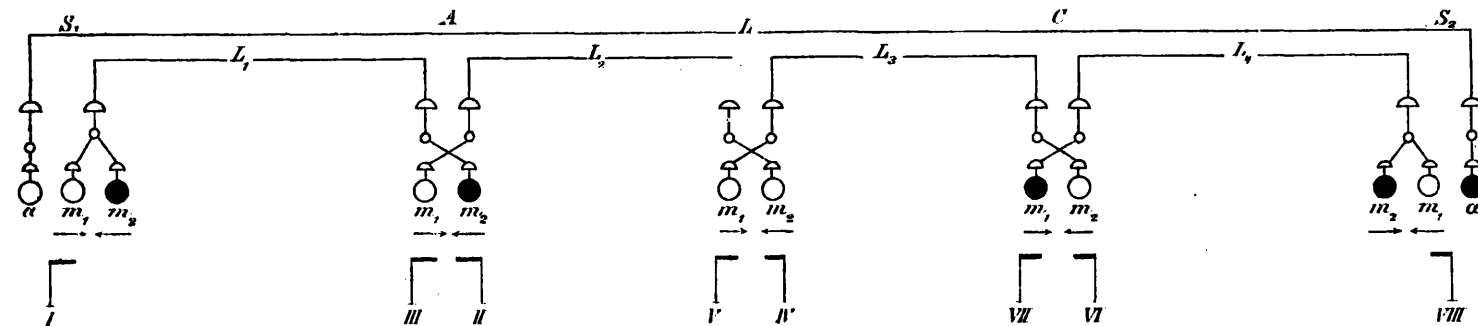


Abb. 4.

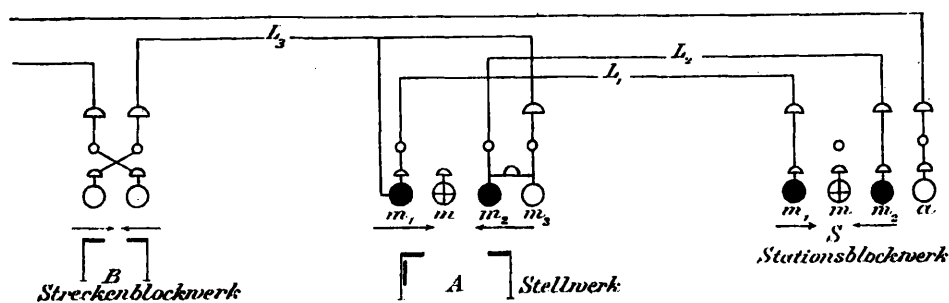


Abb. 3.

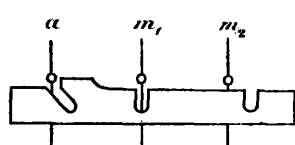


Abb. 5.

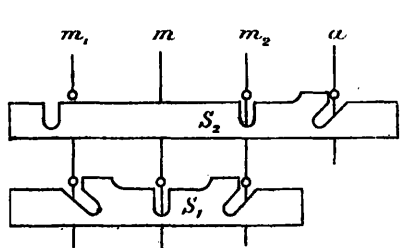


Abb. 6.

