

1 9 1 4

CATALOGUE AND PRICE LIST

SECTION H

Insulated Rail Joints

Fibre End Posts

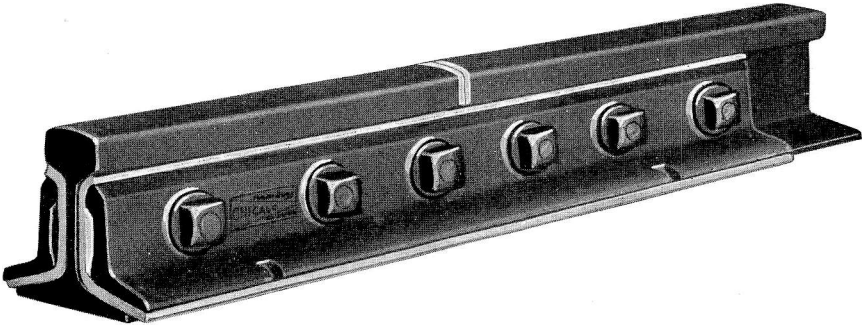
Fibre Bushings, Washers and Plates

Switch Wedge Blocks

Hand Car and Velocipede Axle Insulator

## INSULATED RAIL JOINTS

Style "A"



This Insulated Joint is furnished for any size rail and in any desired length. The Angle Bars are rolled steel and Fibre Insulations are of best gray railroad fibre furnished complete as shown. Prices are dependent upon size of rail and length of joint required.

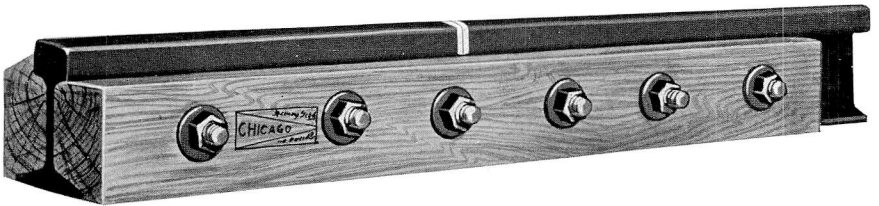
Orders must be accompanied by blue print or other information giving size and drilling of rail, size of bolt holes and length of joint required.

Trade No.	DESCRIPTION	List Price
270	Style A Insulated Joint complete as shown, each . . . . .	.....
270-1	Fibre Angle Bar, each . . . . .	.....
270-2	" Bolt Bushing, each . . . . .	.....
270-3	" Washer for Bolt Bushing, each . . . . .	.....
270-4	Steel " " 270-3, each . . . . .	.....
270-5	Standard Bolt and Nut for 270, each . . . . .	.....
270-6	Fibre End Post, each . . . . .	.....

Repair orders should specify size of rail, bolts, etc., for which repair parts are required.

## INSULATED RAIL JOINTS

### Style "B"



The Insulated Joint shown above is used on side tracks and on less important main lines. Furnished with four and six bolts and 48" long, unless otherwise specified.

The Wood Side Bars are made from selected oak and treated with waterproof compound.

Orders must be accompanied by blue print or other information giving size and drilling of rail, size of bolt holes and length of joint required.

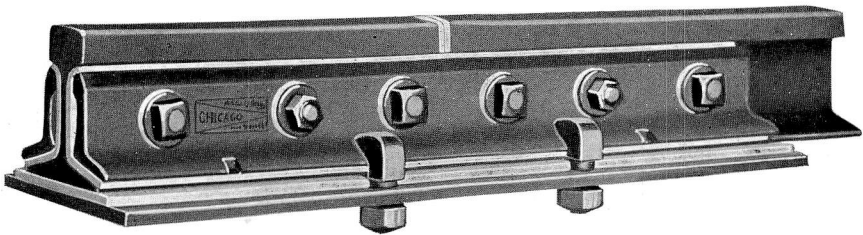
Trade No.	DESCRIPTION	List Price
271	Style B Insulated Rail Joint with four bolts complete as shown, each .....	\$3.00
271-5	Style B Insulated Rail Joint with six bolts complete as shown, each .....	3.40
271-1	Steel Washer for Bolts, each .....	.....
271-2	9" Bolt and Nut, each .....	.....
271-3	Oak Splice Bar for outside of rail, each .....	.....
271-4	" " " " inside " " " .....	.....
271-6	Fibre End Posts, each .....	.....

Repair orders should specify size of rail, bolts, etc., for which repair parts are required.



## INSULATED RAIL JOINTS

Style "C"



Our Style C Insulated Rail Joint is designed for heavy main line traffic and is warranted to hold up track and give a high insulation for track circuits. Joints are made from heavy rolled steel and equipped with best gray railroad fibre. Furnished complete as shown to fit any rail section. Prices are dependent upon size of rail and length of joint required.

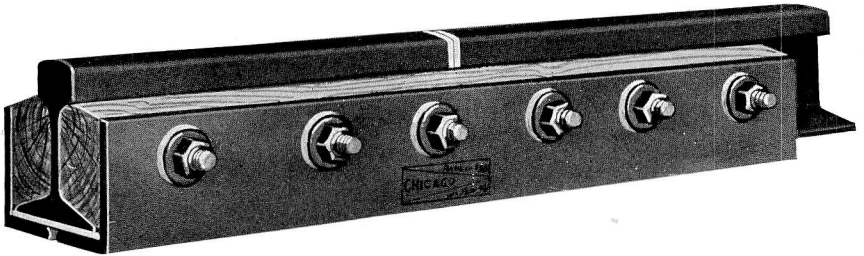
Orders must be accompanied by blue print or other information giving size and drilling of rail, size of bolt holes and length of joint required.

Trade No.	DESCRIPTION	List Price
272	Style C Insulated Rail Joint complete as shown, each . . . . .	.....
272-1	Fibre Angle Bar, each . . . . .	.....
272-2	“ Washers for Bolt Bushing, each . . . . .	.....
272-3	“ Bolt Bushing, each . . . . .	.....
272-4	Steel Washer for 272-2, each . . . . .	.....
272-5	Standard Bolt and Nut for 272, each . . . . .	.....
272-6	Hook Bolt for Base Plate, each . . . . .	.....
272-7	Hexagon Nut for Hook Bolt, each . . . . .	.....
272-8	Steel Base Plate, drilled, each . . . . .	.....
272-9	Fibre “ “ “ “ . . . . .	.....
272-10	“ End Posts, each . . . . .	.....

Repair orders should specify size of rail, bolts, etc., for which repair parts are required.

## INSULATED RAIL JOINTS

Style "D"



Style D Insulated Rail Joint is especially designed for heavy main line traffic. The heavy rolled steel Angle Bars hold the hard Georgia Pine wood fillers under compression, thus assuring high insulation and at the same time making an extremely stiff and solid joint that will hold up track equal to non-insulated Joints. Another feature on this Joint is that both sides are alike and interchangeable thus requiring a minimum repair stock. Prices are dependent upon size of rail and length of joint required.

Orders must be accompanied by blue print or other information giving size and drilling of rail, size of bolt holes and length of joint required.

Trade No.	DESCRIPTION	List Price
273	Style D Insulated Joint complete as shown, each . . . . .	.....
273-1	Hard Georgia Pine Wood Filler, each . . . . .	.....
273-2	Steel Angle Bar, each . . . . .	.....
273-3	Fibre Washer for Bolt Bushing, each . . . . .	.....
273-4	" Bolt Bushing, each . . . . .	.....
273-5	" Base Plate, each . . . . .	.....
273-6	Steel Washer for 273-3, each . . . . .	.....
273-7	Standard Bolt and Nut for 273 . . . . .	.....
273-8	Fibre End Posts, each . . . . .	.....

Repair orders should specify size of rail, bolts, etc., for which repair parts are required.







## HARD VULCANIZED FIBRE

In Red, Gray and Black Colors

The Fibre furnished by us is made in accordance with R. S. A. and A. S. C. E. Specifications furnished as follows: Tubing in random lengths two to three feet, rods about five feet long and sheets about 54 x 68 inches. List prices on this page take special discounts according to quantity ordered for one shipment. An extra charge is made when furnished cut to size or fabricated to any special shape. We are prepared to furnish, upon short notice, Washers, Discs, Ferrules, etc.

Standard Sheets		List Price Per Pound	Round Fibre Rods		List Price Per Foot
Thickness			Diameter		
.005"		\$0.62	$\frac{3}{32}$ "		\$0.19
.010"		.50	$\frac{1}{8}$ "		.19
.015"		.44	$\frac{3}{16}$ "		.19
.020"		.40	$\frac{1}{4}$ "		.19
.025"		.36	$\frac{5}{16}$ "		.20
.030"		.32	$\frac{3}{8}$ "		.21
.035"		.30	$\frac{7}{16}$ "		.27
.040"		.29	$\frac{1}{2}$ "		.35
.045"		.29	$\frac{9}{16}$ "		.44
.075"		.29	$\frac{5}{8}$ "		.50
.100"		.30	$\frac{11}{16}$ "		.62
$\frac{1}{8}$ "		.30	$\frac{3}{4}$ "		.81
$\frac{9}{16}$ "		.31	$\frac{13}{16}$ "		1.00
$\frac{1}{4}$ "		.31	$\frac{7}{8}$ "		1.25
$\frac{5}{16}$ "		.32	$\frac{15}{16}$ "		1.55
$\frac{3}{8}$ "		.32	1"		2.50
$\frac{1}{2}$ "		.35	$1\frac{1}{8}$ "		3.75
$\frac{5}{8}$ "		.39	$1\frac{1}{4}$ "		5.00
$\frac{3}{4}$ "		.43	$1\frac{3}{8}$ "		6.25
$\frac{7}{8}$ "		.49	$1\frac{1}{2}$ "		10.00
1"		.57	$1\frac{5}{8}$ "		12.50
$1\frac{1}{8}$ "		.75	$1\frac{3}{4}$ "		18.80
$1\frac{1}{4}$ "		.94	$1\frac{7}{8}$ "		31.00
$1\frac{3}{8}$ "		1.25	2"		43.00
$1\frac{1}{2}$ "		1.50			
$1\frac{5}{8}$ "		1.88			
$1\frac{3}{4}$ "		2.50			
$1\frac{7}{8}$ "		3.75			
2"		5.00			

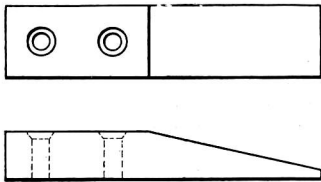
### Round Fibre Tubing

Thickness of Wall	$\frac{1}{16}$ "	$\frac{3}{32}$ "	$\frac{1}{8}$ "	$\frac{5}{32}$ "	$\frac{3}{16}$ "	$\frac{1}{4}$ "
	List Price Per Ft.					
Inside Diameter	\$0.25	\$0.37	\$0.50			
$\frac{1}{8}$ "	.25	.37	.50			
$\frac{3}{16}$ "	.12	.18	.22	\$0.27	\$0.32	
$\frac{1}{4}$ "	.12	.19	.24	.30	.35	
$\frac{5}{16}$ "	.14	.20	.26	.32	.39	
$\frac{3}{8}$ "	.14	.21	.27	.35	.41	
$\frac{7}{16}$ "	.15	.22	.30	.37	.45	\$0.60
$\frac{1}{2}$ "	.19	.25	.32	.40	.49	.65
$\frac{9}{16}$ "	.18	.26	.35	.44	.52	.70
$\frac{5}{8}$ "	.19	.27	.37	.46	.56	.75
$\frac{11}{16}$ "	.20	.30	.40	.50	.60	.80
$\frac{3}{4}$ "	.21	.32	.42	.52	.64	.85
$\frac{13}{16}$ "	.22	.34	.45	.56	.67	.90
$\frac{7}{8}$ "	.24	.36	.48	.59	.71	.95
$1\frac{1}{8}$ "	.25	.37	.50	.62	.75	1.00
$1\frac{1}{4}$ "	.27	.41	.55	.69	.82	1.02
$1\frac{1}{2}$ "	.30	.45	.60	.75	.90	1.24
$1\frac{3}{8}$ "	.32	.49	.65	.81	.97	1.30
$1\frac{5}{8}$ "	.35	.52	.70	.87	1.01	1.40
$1\frac{7}{8}$ "	.37	.56	.75	.94	1.12	1.50
$1\frac{3}{4}$ "	.40	.60	.80	1.00	1.24	1.60
$1\frac{7}{8}$ "	.42	.64	.85	1.01	1.25	1.70
2"	.45	.67	.90	1.12	1.35	1.80

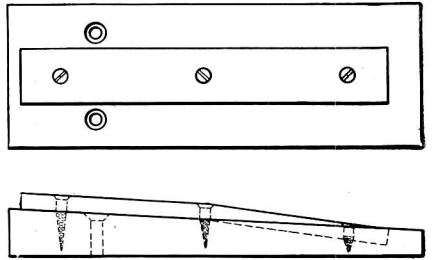


## WEDGE BLOCKS

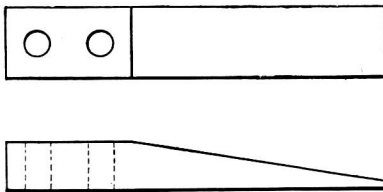
(For Insulating Switch Points)



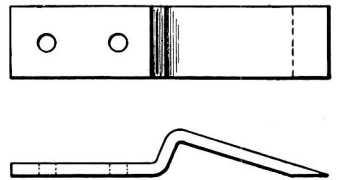
290



292



290-1



291

These Wedge Blocks are placed under the normally open Switch Point, usually two blocks to a point. They are fastened to first two ties in such manner that point rests on inclined portion of blocks only, thus usually eliminating two insulated rail joints against stock rail in proper position.

Trade No.	DESCRIPTION	List Price
290	Steel Wedge Block, countersunk for wood screws, with two screws, complete . . . . .	\$1.06
290-1	Steel Wedge Block, with two Lag Screws, complete . . . . .	1.20
291	“ “ “ “ Oak Base with wood screws complete . . . . .	1.20
292	“ “ “ “ Oak Base with wood screws complete . . . . .	1.35

## AXLE INSULATOR



No. 250

This Insulator is used on hand cars, push cars and velocipedes having steel axles which would short circuit the track circuits in Automatic Signal Territory, Crossing Bell Circuits, etc.

It can be quickly and easily installed on axles varying from 1" to 2" diameter, by merely cutting axle in two with a hack saw. In ordering specify size of Axle.

When installed, axle has practically its original strength. Parts are strong, bolts well cotted and are not apt to work loose in service.

Trade No.	DESCRIPTION	List Price
250	Axle Insulator complete, as shown, each.....	\$6.00