

1914

CATALOGUE AND PRICE LIST

SECTION P

STATION SIGNALS

Train Order

Flag Station

TRAIN ORDER SIGNALS

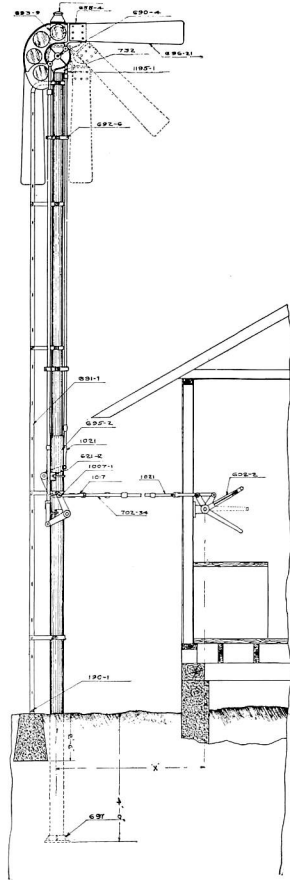
On the following pages we illustrate mechanically operated Semaphore Signals of the Two Blade Type as commonly used for Train Order and Telegraph Block Signals.

We illustrate only the more prominent types. From the illustrations it will be seen that almost any desired combination can be had from the complete line of operating levers, spectacle castings, masts, etc., manufactured by us. Practically each Signal may be equipped with any desired operating lever or spectacles suitable, shown in catalogue.

The illustrations show operating levers on ground floor; it is self-evident that they may be located at any convenient point as in Block Towers on first or second floor, station, shanty, etc.

Signals may be located across tracks from operating levers in which case it is customary to run pipe or wire lines through oil filled pipes equipped with Stuffing Boxes.

Prices on any combination desired and not shown herein will be cheerfully furnished.



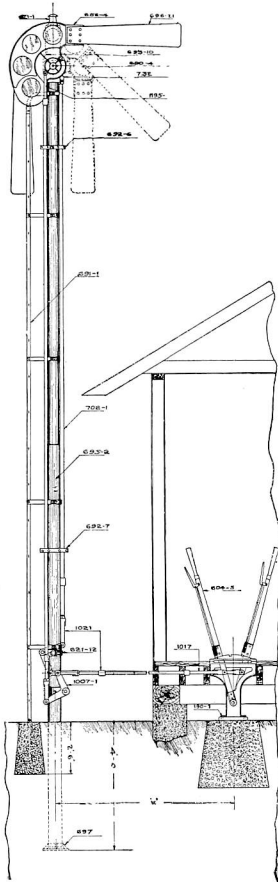
2101

Trade No.	DESCRIPTION	List Price
2101	Train Order Signal complete as shown, consisting of 27' Steel Pole, Base, Ladder, Spectacle Casting with 6½" Glass, Blade, Operating Levers No. 602-2 and all necessary Pipe and Fittings, etc., for locations within 8' from Operating Levers.	\$161.75
2101-1	Same as above with 23' Steel Pole and Base Casting No. 910 complete with Anchor Bolts for use on Concrete Foundation	172.75

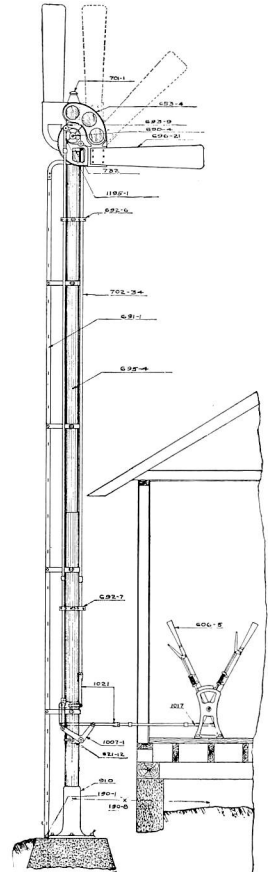
In ordering, specify whether Signal is wanted for Two Position or Three Position, also color of glass required. Above Signals can be furnished with any desired style Spectacle Casting, also with any desired Operating Levers. Prices upon application.

Lamps are not included in above list prices. If desired, should be ordered separately.

TRAIN ORDER SIGNALS



2102



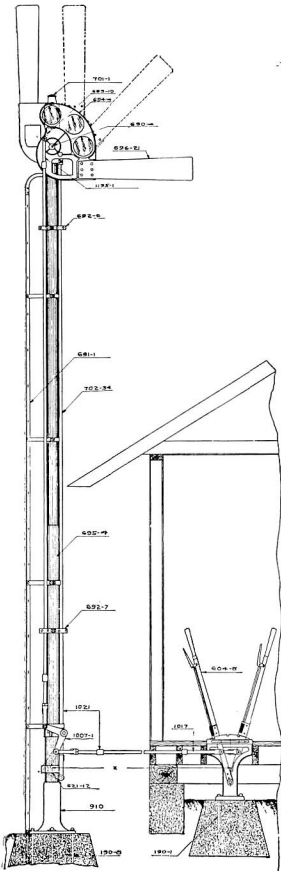
2103-1

Trade No.	DESCRIPTION	List Price
2102	Train Order Signal complete as shown, with 27' Steel Pole, Ladder, Universal Spectacle Casting with 8 $\frac{3}{8}$ " Glass and Blade, Operating Levers No. 604-5 and all necessary Pipe and Fittings, etc., for locations within 8' from Operating Levers	\$203.50
2102-1	Same as above with 23' Steel Pole and Base Casting No. 910, complete with Anchor Bolts for use on Concrete Foundations	214.50
2103-1	Train Order Signal complete as shown, consisting of 23' Pole, Base, Ladder, Spectacle Casting with 6 $\frac{1}{2}$ " Glass, Blade, Operating Levers No. 606-5 and all necessary Pipe and Fittings, etc., for locations within 8' from Operating Levers	209.75
2103	Same as above with 27' Steel Pole and Base Casting No. 697 for use without Concrete Foundation	198.75

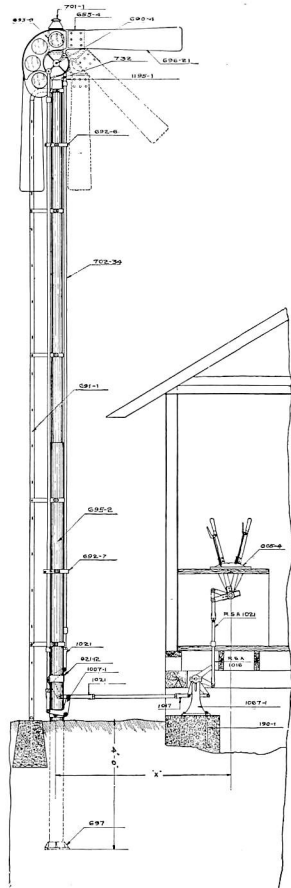
In ordering, specify whether Signal is wanted for Two Position or Three Position, also color of glass required. Above Signals can be furnished with any desired style Spectacle Casting, also with any desired Operating Levers. Prices upon application.

Lamps are not included in above list prices. If desired, should be ordered separately.

TRAIN ORDER SIGNALS



2104-1



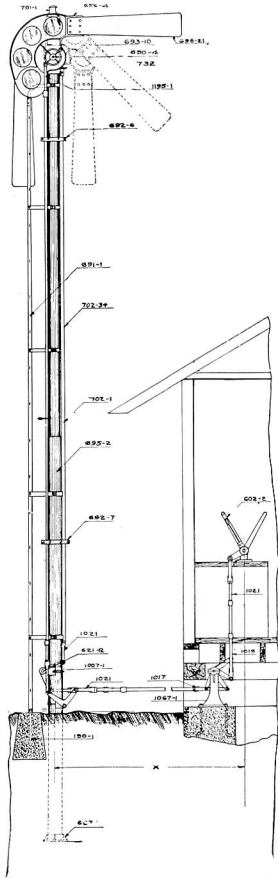
2105

Trade No.	DESCRIPTION	List Price
2104-1	Train Order Signal complete as shown, with 23' Steel Pole, Ladder, Spectacle Casting with 8 $\frac{3}{8}$ " Glass and Blade, Operating Levers No. 604-5 and all necessary Pipe and Fittings, etc., for locations within 8' from Operating Levers	\$217.00
2104	Same as above with 27' Steel Pole and Base No. 697, complete for use without Concrete Foundation	205.00
2105	Train Order Signal complete as shown, consisting of 27' Steel Pole, Base, Ladder, Universal Spectacle Casting with 6 $\frac{1}{2}$ " Glass, Blade, Operating Levers No. 605-4 and all necessary Pipe and Fittings, etc., for locations within 8' from Operating Levers	201.50
2105-1	Same as above with 23' Steel Pole and Base Casting No. 910 with Anchor Bolts for use on Concrete Foundation	212.50

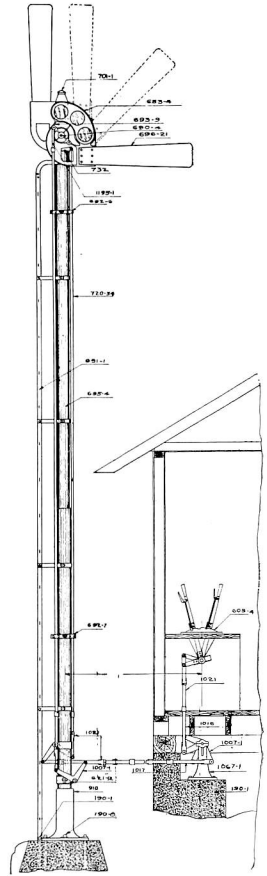
In ordering, specify whether Signal is wanted for Two Position or Three Position, also color of glass required. Above Signals can be furnished with any desired style Spectacle Casting, also with any desired Operating Levers. Prices upon application.

Lamps are not included in above list prices. If desired, should be ordered separately.

TRAIN ORDER SIGNALS



2106



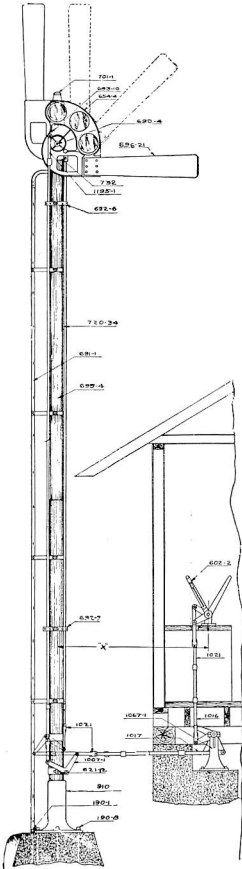
2107-1

Trade No.	DESCRIPTION	List Price
2106	Train Order Signal complete as shown, consisting of 27' Steel Pole, Base, Ladder, Universal Spectacle Casting with 8 $\frac{3}{8}$ " Glass, Blade, Operating Levers No. 602-2 and all necessary Pipe and Fittings, etc., for locations within 8' from Operating Levers.....	\$193.50
2106-1	Same as above with 23' Steel Pole and Base Casting No. 910 with Anchor Bolts for use on Concrete Foundation.....	204.50
2107-1	Train Order Signal complete as shown, consisting of 23' Steel Pole, Base, Ladder, Spectacle Casting with 6 $\frac{1}{2}$ " Glass, Blade, Operating Levers No. 605-4 and all necessary Pipe and Fittings, etc., for locations within 8' from Operating Levers.....	215.50
2107	Same as above with 27' Steel Pole and Base Casting No. 697 for use without Concrete Foundation.....	204.50

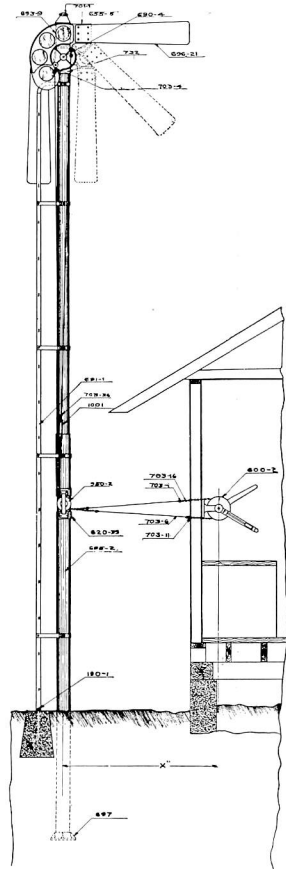
In ordering, specify whether Signal is wanted for Two Position or Three Position, also color of glass required. Above Signals can be furnished with any desired style of Spectacle Casting, also with any desired Operating Levers. Prices upon application.

Lamps are not included in above list prices. If desired, should be ordered separately.

TRAIN ORDER SIGNALS



2108-1

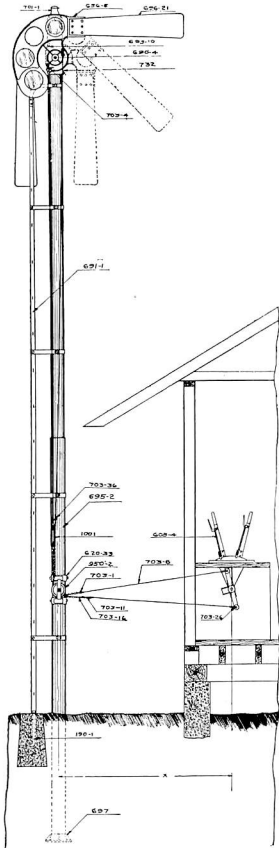


2109

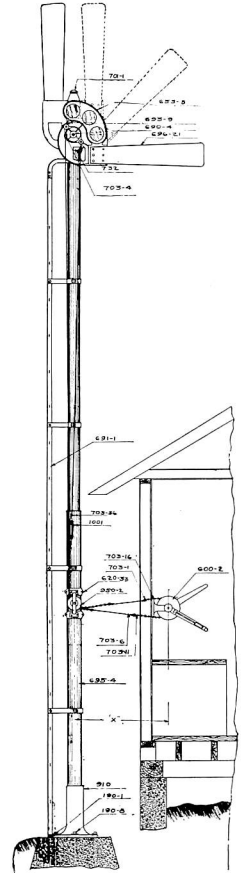
Trade No.	DESCRIPTION	List Price
2108-1	Train Order Signal complete as shown with 23' Steel Pole, Ladder, Spectacle Casting with 8 $\frac{3}{8}$ " Glass and Blade, Operating Levers No. 602-2 and all necessary Pipe and Fittings, etc., for locations within 8' from Operating Levers	\$207.00
2108	Same as above with 27' Steel Pole and Base Casting No. 697 for use without Concrete Foundation.....	196.00
2109	Train Order Signal complete as shown consisting of 27' Steel Pole, Base, Ladder, Universal Spectacle with 6 $\frac{1}{2}$ " Roundels, Levers No. 600-2 and all necessary Wire, Chain, Chain Wheels and Fittings for locations within 8' from Operating Lever.....	153.30
2109-1	Same as above with 23' Steel Pole and Base Casting No. 910, complete with Anchor Bolts for use on Concrete Foundation	164.50

In ordering, specify whether Signal is wanted for Two Position or Three Position, also color of glass required. Above Signals can be furnished with any desired style of Spectacle Casting, also with any desired Operating Levers. Prices upon application.
Lamps are not included in above list prices. If desired, should be ordered separately.

TRAIN ORDER SIGNALS



2110

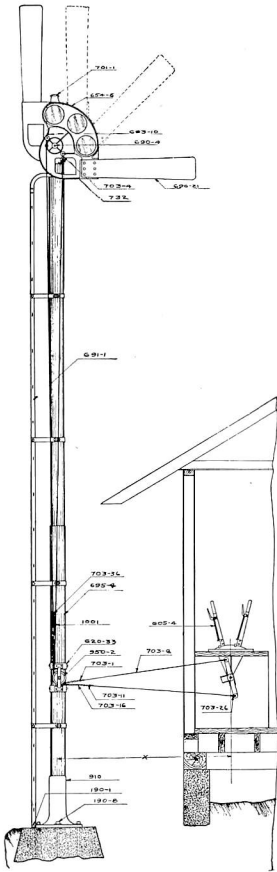


2111-1

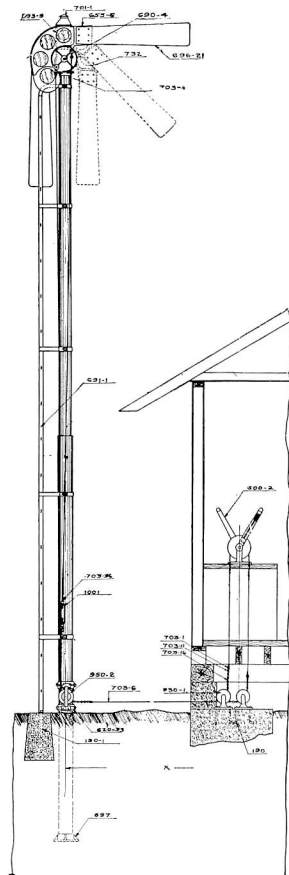
Trade No.	DESCRIPTION	List Price
2110	Train Order Signal complete as shown, consisting of 27' Steel Pole, Ladder, Universal Spectacle Casting with 3 ³ / ₈ " Glass, Blade, Operating Levers No. 605-4 and all necessary Wire, Chain Wheels and Fittings for locations within 8' from Operating Levers.....	\$163.00
2110-1	Same as above with 23' Steel Pole and Base Casting No. 910 complete with Anchor Bolts for use on Concrete Foundation.....	174.00
2111-1	Train Order Signal complete as shown, consisting of 23' Steel Pole, Base, Ladder, Spectacle Casting with 6 ¹ / ₂ " Glass, Blade, Operating Levers No. 600-2 and all necessary Wire, Chain, Chain Wheels and Fittings for locations within 8' from Operating Levers.....	167.00
2111	Same as above with 27' Steel Pole and Base Casting No. 697 for use without Concrete Foundation.....	156.00

In ordering, specify whether Signal is wanted for Two Position or Three Position, also color of glass required. Above Signals can be furnished with any desired style Spectacle Casting, also with any desired Operating Levers. Prices upon application.
Lamps are not included in above list prices. If desired, should be ordered separately.

TRAIN ORDER SIGNALS



2112-1



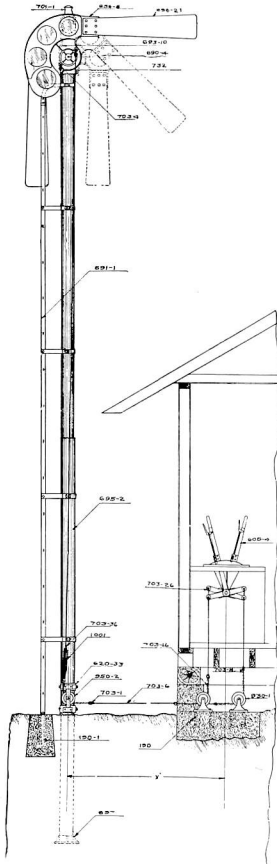
2113

Trade No.	DESCRIPTION	List Price
2112-1	Train Order Signal complete as shown, consisting of 23' Steel Pole, Base, Ladder, Spectacle Casting with 8 $\frac{3}{8}$ " Glass, Blade, Operating Levers No. 605-4 and all necessary Wire, Chain, Chain Wheels and Fittings for locations within 8' from Operating Levers.	\$176.50
2112	Same as above with 27' Steel Pole and Base Casting No. 697 for use without Concrete Foundation.	165.50
2113	Train Order Signal complete as shown, consisting of 27' Steel Pole, Base, Ladder, Universal Spectacle Casting with 6 $\frac{1}{2}$ " Glass, Blade, Operating Levers No. 600-2 and all necessary Wire, Chain, Chain Wheels and Fittings for locations within 8' from Operating Levers.	171.25
2113-1	Same as above with 23' Steel Pole and Base Casting No. 910 complete with Anchor Bolts for use on Concrete Foundation	182.25

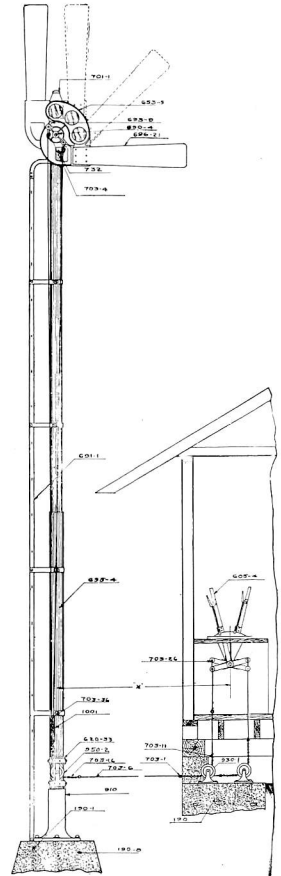
In ordering, specify whether Signal is wanted for Two Position or Three Position, also color of glass required. Above Signals can be furnished with any desired style Spectacle Casting, also with any desired Operating Levers. Prices upon application.

Lamps are not included in above list prices. If desired, should be ordered separately.

TRAIN ORDER SIGNALS



2114



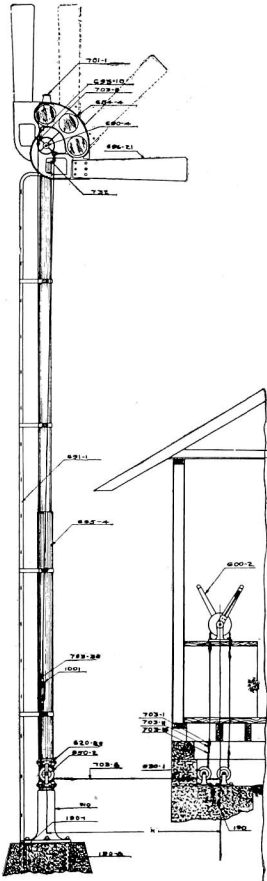
2115-1

Trade No.	DESCRIPTION	List Price
2114	Train Order Signal complete as shown, consisting of 27' Steel Pole, Base, Ladders, Universal Spectacle Casting with 8 3/8" Glass, Blade, Operating Levers No. 605-4 and all necessary Wire, Chain, Chain Wheels and Fittings for locations within 8' from Operating Levers.	\$181.00
2114-1	Same as above with 23' Steel Pole and Base Casting No. 910 complete with Anchor Bolts for use on Concrete Foundation	192.00
2115-1	Train Order Signal complete as shown, consisting of 23' Steel Pole, Base, Anchor Bolts, Ladder, Spectacle Casting with 6 1/2" Glass, Blade, Operating Levers No. 605-4 and all necessary Wire, Chain, Chain Wheels and Fittings for use on Concrete Foundations within 8' from Operating Levers.	193.75
2115	Same as above with 27' Steel Pole and Base Casting No. 697 for use without Concrete Foundation.	182.75

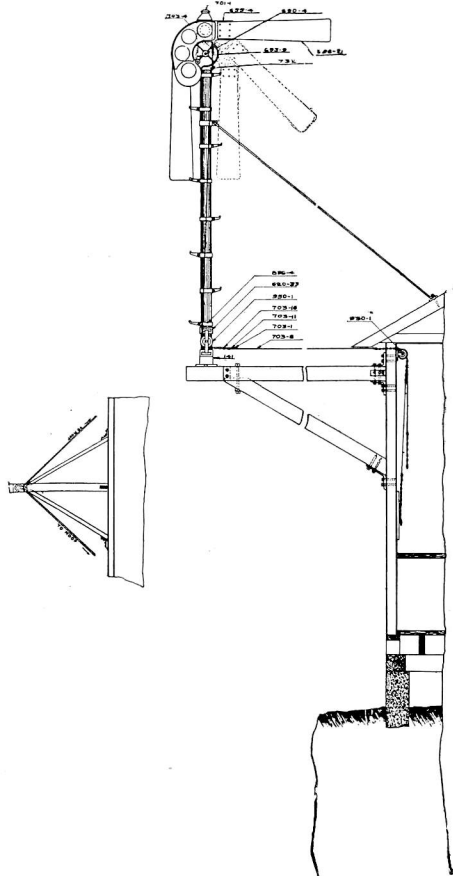
In ordering, specify whether Signal is wanted for Two Position or Three Position, also color of glass required. Above Signals can be furnished with any desired style Spectacle Casting, also with any desired Operating Levers. Prices upon application.

Lamps are not included in above list prices. If desired, should be ordered separately.

TRAIN ORDER SIGNALS



2116-1



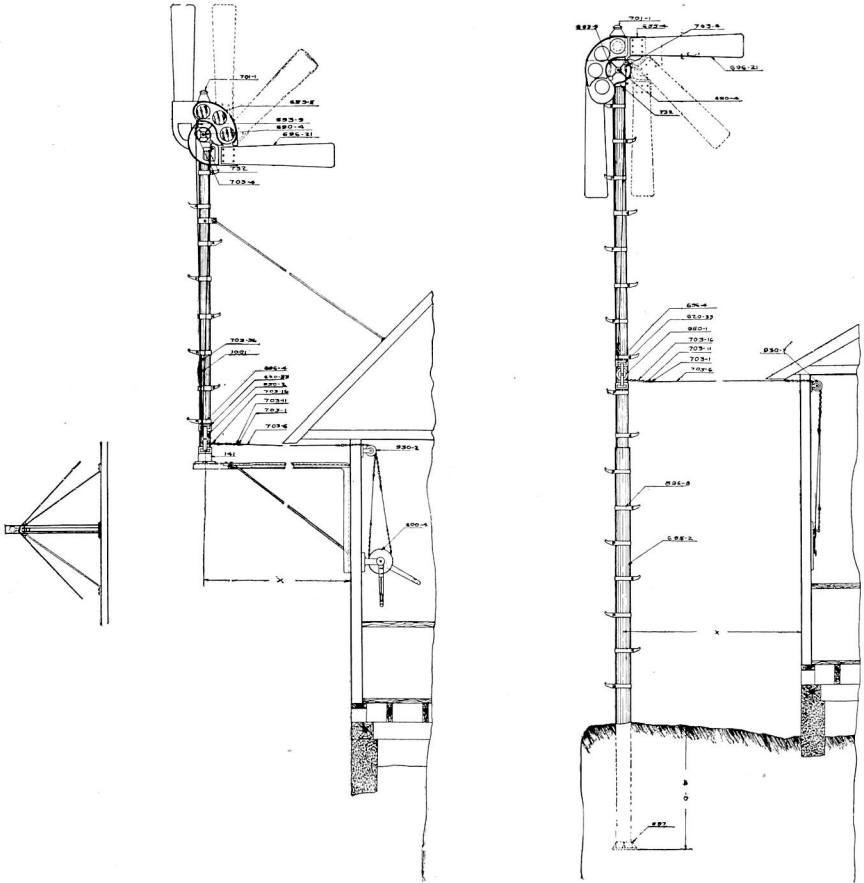
2117

Trade No.	DESCRIPTION	List Price
2116-1	Train Order Signal complete as shown, consisting of 23' Steel Pole, Base, Ladder, Spectacle Casting with 8 $\frac{3}{8}$ " Glass, Blade, Operating Levers No. 600-2 and all necessary Wire, Chain, Chain Wheels and Fittings for locations within 8' from Operating Levers.	\$186.00
2116	Same as above with 27' Steel Pole and Base Casting No. 697 for use without Concrete Foundation.	175.00
2117	Train Order Signal as shown, without Wooden Support and Brace, for location within 8' from building, Universal Spectacle Casting with 6 $\frac{1}{2}$ " Glass, 12' Pole, Pole Steps and all necessary Wire, Chain, Chain Wheels and Fittings. Wood Support is usually furnished by Railroad Co. Prices if desired, furnished upon request.	123.00

In ordering, specify whether Signal is wanted for Two Position or Three Position, also color of glass required. Above Signals can be furnished with any desired style of Spectacle Casting, also with any desired Operating Levers. Prices upon application.

Lamps are not included in above list prices. If desired, should be ordered separately.

TRAIN ORDER SIGNALS



2118

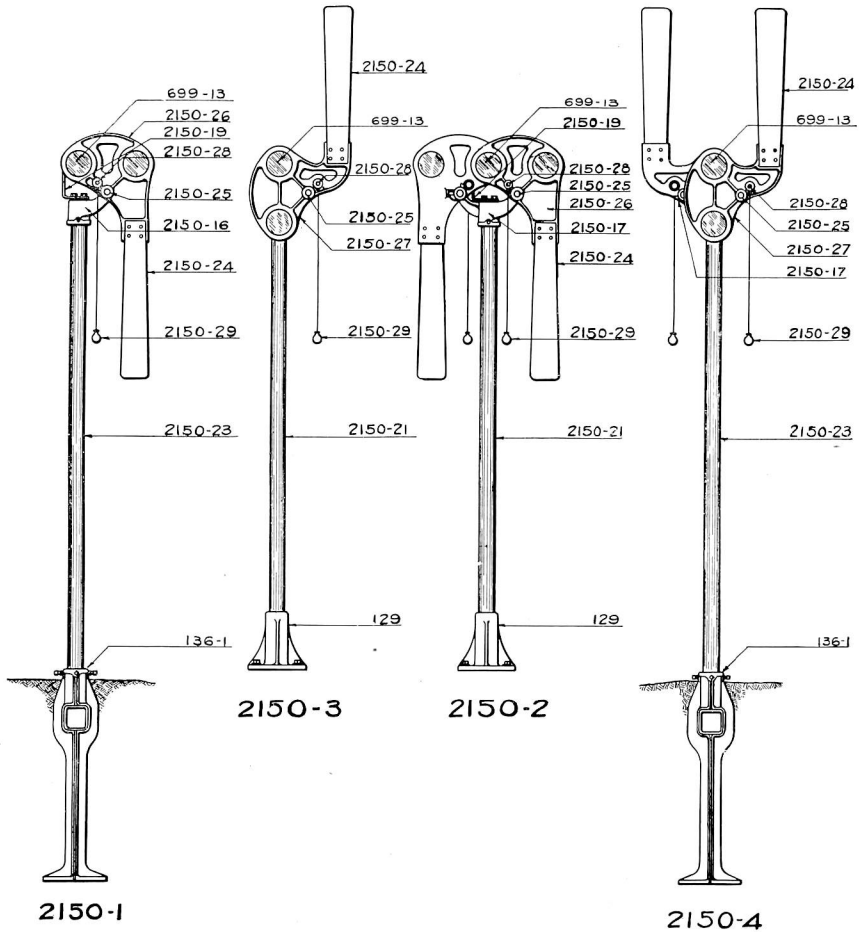
2119

Trade No.	DESCRIPTION	List Price
2118	Train Order Signal complete as shown, consisting of 12' Pole, with Pole Steps, Channel Iron Support and Braces for location of Signal within 8' from building, Spectacle Casting with 6½" Glass, Operating Lever No. 600-4, together with all necessary Wire, Chain, Chain Wheels, Fittings, etc.	\$165.00
2119	Train Order Signal complete as shown, consisting of 27' Steel Pole, Base, Universal Spectacle Casting with 6½" Glass, Blade and all necessary Wire, Chain Wheels, Chain, Steps and Fittings, etc.	
2119-1	Same as above with 23' Steel Pole and Base Casting No. 910 complete with Anchor Bolts for use on Concrete Foundation	142.75

In ordering, specify whether Signal is wanted for Two Position or Three Position, also color of glass required. Above Signals can be furnished with any desired style of Spectacle Casting, also with any desired Operating Levers. Prices upon application.

Lamps not included in above list prices. If desired, should be ordered separately.

FLAG STATION SIGNALS



2150

Flag Station Signals as shown above can be mounted on Station Platforms, Concrete Foundations, or are furnished with our Standard Underground Base for setting them directly into ground. They can be furnished for One or Two Light Indication with any desired color Roundels. One Light Indication shows a stop signal only, while handle is being held down. Two Light Indication normally shows a clear signal, and when pulled down a stop signal, letting go of handle restores signal blade to clear. Oil Lamps or Electric Lamps can be used for illumination.

Signals as shown are equipped with 8' Iron Pole, but any length Pole can be furnished. These Signals are in every way modern and are substantially constructed, as the Signals are usually placed at Flag Stations where there is no agent and where chances of malicious persons tampering with them and damaging them are great, the simplicity and durable construction is of great importance.



FLAG STATION SIGNALS

Lamps are not included in prices below, they must be ordered separately, but Signals are furnished with Roundels. Orders should specify number and color of Roundels required.

Trade No.	DESCRIPTION	List Price
2150-1	Single Arm Lower Quadrant Flag Station Signal complete as shown, 8' High	\$27.50
2150-2	Double Arm Lower Quadrant Flag Station Signal complete as shown, 8' High	36.00
2150-3	Single Arm Upper Quadrant Flag Station Signal complete as shown, 8' High	26.00
2150-4	Double Arm Upper Quadrant Flag Station Signal complete as shown, 8' High	37.50
	Add to above prices, for each additional foot of height up to 12 ft.	.65
136-1	Underground Base with Set Screws	6.00
129	Foundation Base	5.00
2150-21	Mast for 2150-2 and 2150-3 Signal	4.25
2150-23	“ “ 2150-1 “ 2150-4 “	4.75
2150-16	Single Arm Bearing complete with Stud, Washer, Cotter and Set Screws	7.50
2150-17	Double Arm Bearing complete with Studs, Washers, Cotter and Set Screws	9.00
2150-25	Bearing Stud with Washer and Cotter	.27
2150-18	Stud Only	.22
1194-3	Washer Only	.04
2150-19	Lamp Bracket	.72
2150-26	Lower Quadrant Spectacle complete with Roundel Rings and Bolts	4.50
2150-27	Upper Quadrant Spectacle complete with Roundel Rings and Bolts	4.50
2150-12	Lower Quadrant Spectacle Only	4.00
2150-15	Upper “ “	4.00
662-7	Spectacle Ring for 5 $\frac{3}{8}$ " Roundels	.13
2150-14	“ “ Obscuring Light	.13
699-13	Glass Roundels, 5 $\frac{3}{8}$ " dia. Specify Color	2.16
2150-24	Semaphore Blade, 2' 6" long	.70
2150-29	Pull Chain complete with Handle	.30
703-16	$\frac{1}{4}$ " Proof Chain for above	.40
2150-20	Pull Handle	3.60
703-11	Split Links, per C.	.04
1194-9	$\frac{1}{2}$ " x 1 $\frac{1}{4}$ " Square Head Set Screws for Base	.90
704-14	$\frac{1}{8}$ " x 1 $\frac{1}{2}$ " Cotter Pin for Operating Stud, per C.	.90
2150-30	$\frac{1}{8}$ " x 1 $\frac{3}{4}$ " “ “ Bearing Stud, per C.	.11
696-7	$\frac{3}{8}$ " x 1 $\frac{1}{2}$ " Mushroom Head Bolts and Square Nuts for fastening Semaphore Blade to Spectacle	.03
1097-26	$\frac{1}{4}$ " x 1" Square Head Machine Bolts and Nuts for fastening Roundel Rings to Spectacle	.04
801-29	$\frac{1}{2}$ " x 1" Set Screw for Bearings	.04
602-20	$\frac{1}{2}$ " x $\frac{7}{8}$ " Hexagon Cap Screws Lamp Bracket to Bearing	.04